



MIDLAND MFG CO.

ESTABLISHED 1889 - FORT WORTH



MIDLAND WELL CYLINDERS

DEEP WELL, SHALLOW WELL & HEAVY WALL CYLINDERS
FLOAT VALVES, TANK FLANGES, STUFFING BOXES

PRICE BOOK
December 15, 2017

MIDLAND MANUFACTURING COMPANY

4800 Esco Drive
Fort Worth, Texas 76140
817-478-4848 | Fax 817-483-9815
www.midland-midco.com



MANUFACTURING
WATER WELL CYLINDERS
FOR OVER 129 YEARS

LEADING THE INDUSTRY WITH OUR QUALITY & SERVICE

Cast Bronze Products

MARCOZA Architectural/Memorial Products

MIDCO Municipal Products

2018 MIDLAND WATER WELL CYLINDERS PRICE BOOK

Shipping Discounts & Warranty

SHIPPING PROGRAM

Prepaid freight, including fuel service charges, is available on \$2,500 net orders or larger and is FOB our dock in Fort Worth to destination or port of departure to locations outside the continental 48 states. The standard freight also includes fuel service charges. Midland Manufacturing Company is not responsible for additional freight delivery charges such as residential deliveries, inside deliveries, deliveries by appointment, deliveries without a dock, deliveries on military bases, or excessive unloading time. Additional delivery fees may also apply as this is not a complete list of delivery exceptions.

Shipping orders over \$2,500 to locations outside of the continental US is *FREE* to our designated port or border city; Seattle for Alaska shipments, San Diego for Hawaii shipments, etc.

All discounts subject to change without notice.

The current price book, product catalog, and product details are also available @ www.midland-midco.com and hard back binder price books are available upon request.

All Midland & MIDCO products and components are manufactured in the UNITED STATES OF AMERICA and are fully compliant with NSF 61 Annex G Standard 372 - Safe Drinking Water Act & Public Law 111-380, the "BUY AMERICAN" section 1605 of the ARRA of 2009, LEED 2009, FHWA Buy America, AIS, Conflict Minerals Requirements, and Recycled Materials Certifications.

WARRANTY

Goods manufactured by Midland Manufacturing Company which are found to be defective will be replaced at no charge upon written notice and receipt of defective parts. Since we have no control over the manner in which our equipment is installed and/or used, warranty obligations apply only when Midland products are used for the intended purpose in accordance with acceptable installation and operating practices. We are not responsible for labor or any other costs incurred in replacing or repairing damages, either direct or indirect, due to products of our manufacture. The amount of damage is limited to the price of defective goods only.



MIDLAND WATER WELL CYLINDERS

All brass **Deep Well #449** open top cylinders are made with 11 Gauge (.125 wall) seamless brass tubing; available with solid bronze BALL valves or SPOOL valves. Select 3 leathers or 4 leathers on your plunger valve. Plungers are tapped in bottom so they can screw onto the check valve for easy removal. The #449 caps are not interchangeable with #852 barrels. Longer strokes are available upon request. Please see our online catalog for product specifications and details at: www.midland-midco.com

#449 11 Gauge Prices

			#449				#449B				Repair Barrels			
Inside Diameter	Barrel Length	Stroke	P/N	3 Leather Spool Plunger	P/N	4 Leather Spool Plunger	P/N	3 Leather Ball Plunger	P/N	4 Leather Ball Plunger	P/N	BLC Barrels less Caps	P/N	BWC Barrels With Caps
1-3/8"	18	10	211	294.80	221	N/A	231	287.10	241	N/A	251	89.10	261	148.50
	24	17	212	317.90	222	N/A	232	310.20	242	N/A	252	112.20	262	171.60
	30	23	213	341.00	223	N/A	233	333.30	243	N/A	253	135.30	263	194.70
1-7/8"	18	8	214	323.40	224	358.60	234	326.70	244	363.00	254	110.00	264	189.20
	24	14	215	348.70	225	383.90	235	352.00	245	388.30	255	135.30	265	214.50
	30	20	216	374.00	226	409.20	236	377.30	246	413.60	256	160.60	266	239.80
	36	26	217	399.30	227	434.50	237	402.60	247	438.90	257	185.90	267	265.10
	42	32	218	424.60	228	459.80	238	427.90	248	464.20	258	211.20	268	290.40
2-1/4"	24	13	219	432.30	229	500.50	239	457.60	249	501.60	259	152.90	269	270.60
	30	19	2110	468.60	2210	536.80	2310	493.90	2410	537.90	2510	189.20	2610	306.90
	36	26	2111	504.90	2211	573.10	2311	530.20	2411	574.20	2511	225.50	2611	343.20
	42	31	2112	541.20	2212	609.40	2312	566.50	2412	610.50	2512	261.80	2612	379.50
2-3/4"	24	12	2113	643.50	2213	697.40	2313	668.80	2413	735.90	2513	204.60	2613	371.80
	30	18	2114	684.20	2214	738.10	2314	709.50	2414	776.60	2514	245.30	2614	412.50
	36	24	2115	724.90	2215	778.80	2315	750.20	2415	817.30	2515	286.00	2615	453.20
	42	30	2116	765.60	2216	819.50	2316	790.90	2416	858.00	2516	326.70	2616	493.90
	48	36	2117	806.30	2217	860.20	2317	831.60	2417	898.70	2517	367.40	2617	534.60
3-3/4"	36	20	2118	1,149.50	2218	1,226.50	2318	1,331.00	2418	1,403.60	2518	306.90	2618	506.00
	42	26	2119	1,213.30	2219	1,290.30	2319	1,394.80	2419	1,467.40	2519	370.70	2619	569.80
	48	32	2120	1,277.10	2220	1,354.10	2320	1,458.60	2420	1,531.20	2520	434.50	2620	633.60
	54	38	2121	1,340.90	2221	1,417.90	2321	1,522.40	2421	1,595.00	2521	498.30	2621	697.40
	60	44	2122	1,404.70	2222	1,629.88	2322	1,586.20	2422	1,658.80	2522	562.10	2622	761.20

SEE ONLINE CATALOG FOR MORE DETAILS @ WWW.MIDLAND-MIDCO.COM

PRICES SUBJECT TO CHANGE WITHOUT NOTICE

1889 - 129 Years of Quality & Service - 2018

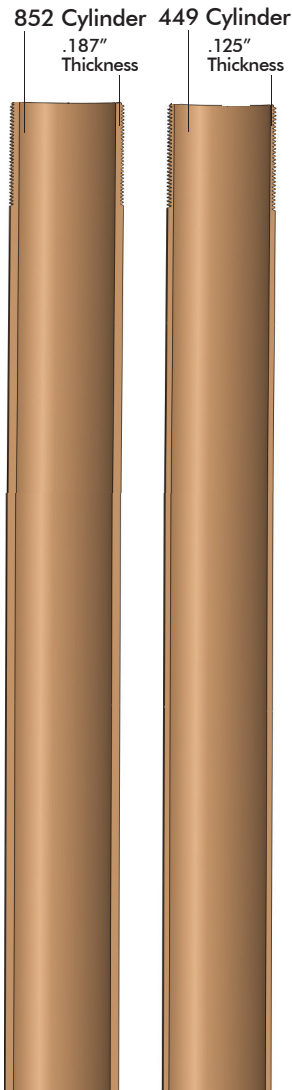




MIDLAND WATER WELL CYLINDERS

All brass **Heavy Barrel #852** (Deep Well) open top cylinders are made with 10 Gauge (.187 wall) seamless brass tubing; available with solid bronze BALL valves or SPOOL valves. Select 3 leathers or 4 leathers on your plunger valve. Plungers are tapped in bottom so they can screw onto the check valve for easy removal. The #852 caps are not interchangeable with #449 barrels. Longer strokes are available upon request. Please see our online catalog for product specifications and details at: www.midland-midco.com

Heavy Barrel #852 Prices



			#852				#852B				Repair Barrels			
Inside Diameter	Barrel Length	Stroke	P/N	3 Leather	P/N	4 Leather	P/N	3 Leather	P/N	4 Leather	P/N	BLC	P/N	BWC
				Spool Plunger				Ball Plunger		Ball Plunger		Barrels less Caps		Barrels With Caps
1 7/8"	24	14	8012	397.10	8022	434.50	8032	392.70	8042	415.80	8052	163.18	8062	246.42
	30	20	8013	433.40	8023	470.80	8033	429.00	8043	452.10	8053	199.80	8063	283.06
	36	26	8014	469.70	8024	507.10	8034	465.30	8044	488.40	8054	236.44	8064	319.68
	42	32	8015	506.00	8025	543.40	8035	501.60	8045	524.70	8055	273.06	8065	356.32
	48	38	8016	542.30	8026	579.70	8036	537.90	8046	561.00	8056	309.70	8066	392.94
2 1/4"	24	13	8018	522.50	8028	544.50	8038	515.90	8048	551.10	8058	185.38	8068	315.24
	30	19	8019	563.20	8029	585.20	8039	556.60	8049	591.80	8059	226.44	8069	356.32
	36	26	80110	603.90	80210	625.90	80310	597.30	80410	632.50	80510	267.52	80610	397.38
	42	31	80111	644.60	80211	666.60	80311	638.00	80411	673.20	80511	308.58	80611	438.46
	48	37	80112	685.30	80212	707.30	80312	678.70	80412	713.90	80512	349.66	80612	479.52
2 3/4"	24	12	80113	698.50	80213	749.10	80313	724.90	80413	767.80	80513	229.78	80613	437.34
	30	18	80114	744.70	80214	795.30	80314	771.10	80414	814.00	80514	276.40	80614	483.96
	36	24	80115	790.90	80215	841.50	80315	817.30	80415	860.20	80515	323.02	80615	530.58
	42	30	80116	837.10	80216	887.70	80316	863.50	80416	906.40	80516	369.64	80616	577.20
	48	36	80117	883.30	80217	933.90	80317	909.70	80417	952.60	80517	416.26	80617	623.82
3 3/4"	30	18	80118	1,238.60	80218	1,301.30	80318	1,398.10	80418	1,454.20	80518	349.80	80618	568.70
	36	20	80119	1,302.40	80219	1,365.10	80319	1,461.90	80419	1,518.00	80519	413.60	80619	632.50
	42	26	80120	1,366.20	80220	1,428.90	80320	1,525.70	80420	1,581.80	80520	477.40	80620	696.30
	48	32	80121	1,573.00	80221	1,492.70	80321	1,589.50	80421	1,645.60	80521	541.20	80621	760.10

SEE ONLINE CATALOG FOR MORE DETAILS @ WWW.MIDLAND-MIDCO.COM

PRICES SUBJECT TO CHANGE WITHOUT NOTICE

1889 - 129 Years of Quality & Service - 2018





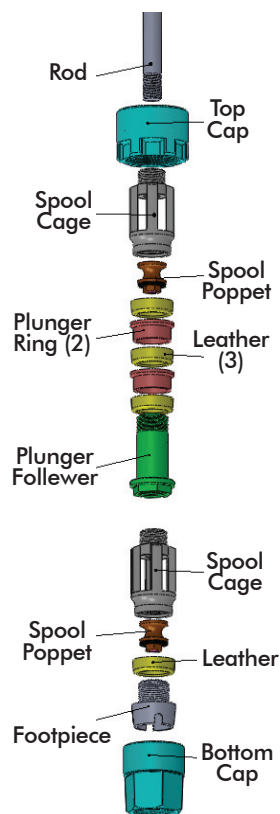
MIDLAND WATER WELL CYLINDERS

All **Deep Well Repair Parts** can be used for both #449 and #852 cylinders, except for the top caps and bottom caps which are not interchangeable. Please see our online catalog for product specifications and details at: www.midland-midco.com



Deep Well Repair Parts

For #449 & #852 Cylinders										
Part Description	1-3/8"	List \$	1-7/8"	List \$	2-1/4"	List \$	2-3/4"	List \$	3-3/4"	List \$
11 Gauge Top Cap for #449	3122	31.70	3222	43.80	3322	67.98	3422	92.44	3522	154.70
11 Gauge Bottom Cap for #449	3123	35.60	3223	49.96	3323	75.96	3423	96.08	3523	167.04
Top Cap for #852	N/A	N/A	80724	43.80	80726	67.98	80728	92.44	80730	154.70
Bottom Cap for #852	N/A	N/A	80725	49.96	80727	75.96	80729	96.08	80731	175.28
Spool Plunger Valve complete										
3 Leather	3126	102.60	3226	128.36	3326	153.40	3426	219.34	3526	442.14
4 Leather	N/A	N/A	3227	161.34	3327	189.08	3427	264.24	3527	527.70
Ball Plunger Valve complete										
3 Leather	3128	100.40	3228	129.66	3328	164.62	3428	255.90	3528	573.40
4 Leather	N/A	N/A	3229	162.64	3329	200.80	3429	300.46	3529	657.20
Spool Check Valve complete	3130	78.28	3230	90.92	3330	118.80	3430	160.54	3530	328.78
Ball Check Valve complete	3131	73.34	3231	96.28	3331	128.56	3431	207.94	3531	470.56
Spool Plunger/Check Cage	3132	38.64	3232	42.40	3332	55.96	3432	78.42	3532	144.54
Ball Plunger/Check Cage	3133	35.16	3233	42.40	3333	56.00	3433	78.42	3533	144.54
Plunger Follower 3 leather	3134	27.96	3234	32.38	3334	38.40	3434	54.76	3534	127.10
Plunger Follower 4 leather	N/A	N/A	3235	51.68	3335	58.50	3435	76.54	3535	172.98
Plunger Ring	3136	8.54	3236	9.78	3336	11.94	3436	18.42	3536	30.98
Footpiece (check bottom)	3139	25.78	3239	27.96	3339	36.54	3439	46.42	3539	96.04
Spool Poppet Complete	3140	17.82	3240	21.44	3340	24.66	3440	32.98	3540	75.96
Spool Poppet Nut	3141	0.84	3241	1.02	3341	1.28	3441	1.56	3541	2.80
Spool Poppet Washer	3142	2.34	3242	2.92	3342	3.16	3442	3.50	3542	4.40
Bronze Balls	3143	8.86	3243	20.38	3343	31.70	3443	81.50	3543	224.58
Size Ball Inches	3/4"		1-1/16"		1-5/16"		1-3/4"		2 -1/2"	



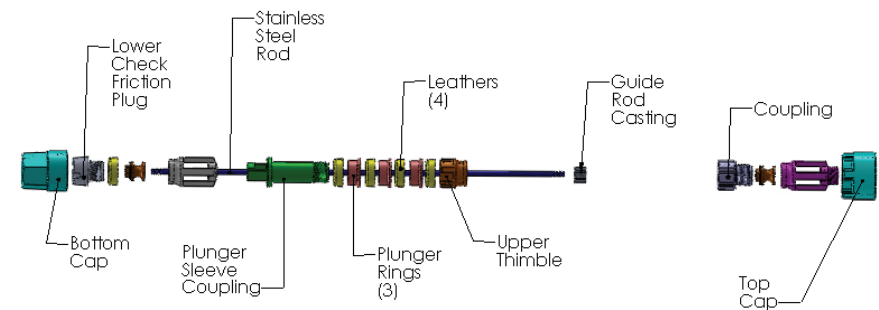


MIDLAND WATER WELL CYLINDERS

E-Z Pull Cylinders are designed to make the pulling of the lower check valve easy by attaching the lower spool with a stainless steel rod which is also attached to the plunger valve. When the plunger valve is withdrawn it opens the lower check valve releasing the water which is then withdrawn with the plunger valve. The up and down movement or jarring motion of the rods (not a steady pull) enable the removal of the lower valve. The lower check valve can be cleaned by raising the spool off the seat slightly and letting the water inside the pipe flush back thru the lower valve. E-Z Pull Cylinders are available in 11 Gauge #449 and 10 Gauge #852. The plunger pipe is 6" shorter than the cylinder; the guide rod is the same length as the cylinder barrel. Please see our online catalog for product specifications and details at: www.midland-midco.com

E-Z Pull Cylinders

Inside Diameter	Barrel Length	Stroke	P/N	#449 11 Gauge Barrel P/N	#852 10 Gauge Heavy Barrel P/N	Complete #19 Plunger Assembly P/N
1-7/8"	24	12	411	454.30	8072	517.00
	30	18	412	479.60	8073	553.30
	36	24	413	504.90	8074	589.60
	42	30	414	530.20	8075	625.90
2-1/4"	48	36	415	555.50	8076	662.20
	24	10	416	562.10	8077	649.00
	30	16	417	598.40	8078	689.70
	36	22	418	634.70	8079	730.40
2-3/4"	42	28	419	671.00	80710	771.10
	48	34	4110	707.30	80711	811.80
	24	6	4111	753.50	80712	840.40
	30	12	4112	794.20	80713	904.20
3"	36	18	4113	834.90	80714	968.00
	42	24	4114	875.60	80715	1031.80
	48	30	4115	916.30	80716	1095.60
						4215 549.46



Length of Cylinder	24"	30"	36"	42"	48"
* #4 Plunger pipe - 1 7/8"	4131 34.64	4132 46.18	4133 57.72	4134 69.26	4135 80.82
* #4 Plunger pipe - 2 1/4"	4231 41.56	4232 55.42	4233 69.26	4234 83.12	4235 96.98
* #4 Plunger pipe - 2 3/4"	4331 48.48	4332 64.66	4333 80.82	4334 96.98	4335 113.14
** #10 SS Guide Rod - all sizes same	4136 37.40	4137 46.76	4138 56.10	4139 65.48	4140 74.82

E-Z Pull Repair Parts

Description	P/N	1-7/8"	P/N	2-1/4"	P/N	2-3/4"
#1 Upper check cage	4116	40.14	4216	57.28	4316	77.58
#2 Upper check spool complete	4117	21.62	4217	23.76	4317	33.70
#3 Upper thimble	4118	26.94	4218	35.40	4318	46.66
#3A Upper check assembly	4119	81.00	4219	106.70	4319	144.26
#4 Plunger pipe - per foot						*
#5 Plunger sleeve coupling	4121	18.38	4221	27.78	4321	32.84
#6 Plunger sleeve	4122	35.80	4222	59.90	4322	117.70
#7 Plunger rings	4123	8.46	4223	9.70	4323	11.84
#9 Plunger complete assembly	4124	94.80	4224	136.06	4324	168.46
#10 SS Guide rod - per foot						**
#11 Guide rod casting	4126	7.86	4226	8.48	4326	9.18
#12 Lower check cage	4127	42.90	4227	43.98	4327	56.08
#13 Lower check friction plug	4128	26.24	4228	35.40	4328	47.02
#14 Lower check spool complete	4129	24.58	4229	28.28	4329	39.30
#15A Lower check assembly-L/Rod	4130	90.98	4230	106.54	4330	136.34

See table above for details.

See table above for details.

SEE ONLINE CATALOG FOR MORE DETAILS @ WWW.MIDLAND-MIDCO.COM

PRICES SUBJECT TO CHANGE WITHOUT NOTICE

1889 - 129 Years of Quality & Service - 2018

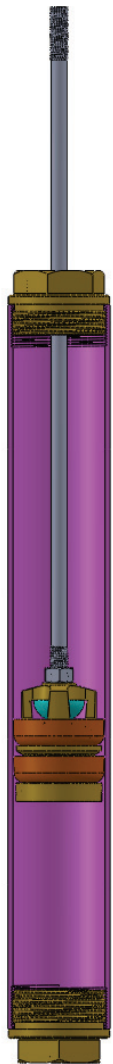




MIDLAND WATER WELL CYLINDERS

The **Shallow Well #442 and #444** are closed top cylinders designed for smaller diameter shallow depth wells made with 11 Gauge seamless brass tubing. The #442 plunger is all brass with hemispherical poppet; the check poppet is fitted with a special facing for a secure seal. The #444 has a special facing on both the check and plunger poppet. A 2" clearance is provided for operation at each stroke specified. There are 6" I.D. cylinders available, upon request. Call for quote. Please see our online catalog for more product specifications and details at: www.midland-midco.com

Shallow Well #442 and #444



Cylinder I.D.	Length & Std Pipe Connections	Stroke	#442		#444	
			P/N	List \$	P/N	List \$
2"	x 14" x 1-1/4"	6	612	229.90	622	245.30
	x 16" x 1-1/4"	8	613	238.50	623	251.90
	x 18" x 1-1/4"	10	614	247.10	624	258.50
	x 20" x 1-1/4"	12	615	255.70	625	265.10
2-1/4"	x 14" x 1-1/4"	6	617	256.86	627	275.00
	x 16" x 1-1/4"	8	618	264.00	628	282.16
	x 18" x 1-1/4"	10	619	271.16	629	289.30
	x 20" x 1-1/4"	12	6110	278.30	6210	296.46
2-1/2"	x 14" x 1-1/4"	6	6112	281.20	6212	302.50
	x 16" x 1-1/4"	8	6113	290.90	6213	310.40
	x 18" x 1-1/4"	10	6114	300.60	6214	318.24
	x 20" x 1-1/4"	12	6115	310.30	6215	326.12
3"	x 14" x 1-1/2"	6	6122	366.86	6222	392.16
	x 16" x 1-1/2"	8	6123	376.20	6223	401.50
	x 18" x 1-1/2"	10	6124	385.56	6224	410.86
	x 20" x 1-1/2"	12	6125	400.90	6225	420.20
3-1/2"	x 14" x 2"	7	6127	485.10	6227	522.50
	x 16" x 2"	9	6128	495.00	6228	532.40
	x 18" x 2"	11	6129	504.90	6229	542.30
	x 20" x 2"	13	6130	514.80	6230	552.20
4"	x 14" x 2"	7	6132	605.00	6232	645.70
	x 16" x 2"	9	6133	616.00	6233	656.70
	x 18" x 2"	11	6134	627.00	6234	667.70
	x 20" x 2"	13	6135	638.00	6235	678.70

Pipe Cap Size

Option	Stroke	P/N	#442	P/N	#444
x 14" x 1-1/2"	6	16112	277.20	16212	298.10
x 16" x 1-1/2"	8	16113	284.90	16213	305.80
x 18" x 1-1/2"	10	16114	292.60	16214	313.50
x 20" x 1-1/2"	12	16115	300.30	16215	321.20
x 14" x 1-1/4"	6	16122	366.90	16222	392.20
x 16" x 1-1/4"	8	16123	376.20	16223	401.50
x 18" x 1-1/4"	10	16124	385.60	16224	410.90
x 20" x 1-1/4"	12	16125	394.90	16225	420.20

Pipe Cap Size

Option	Stroke	P/N	#442	P/N	#444
x 14" x 2"	6	26122	366.90	26222	392.20
x 16" x 2"	8	26123	376.20	26223	401.50
x 18" x 2"	10	26124	385.60	26224	410.90
x 20" x 2"	12	26125	394.90	26225	420.20

SEE ONLINE CATALOG FOR MORE DETAILS @ WWW.MIDLAND-MIDCO.COM

PRICES SUBJECT TO CHANGE WITHOUT NOTICE

1889 - 129 Years of Quality & Service - 2018

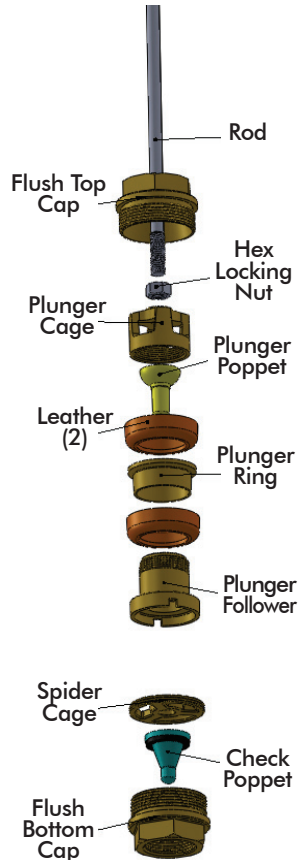




MIDLAND WATER WELL CYLINDERS

All **Shallow Well Repair Parts** All Shallow Well Repair Parts can be used for both #442 and #444 cylinders. Select your choice of hemispherical (#442) or faced poppet (#444) for the plunger, which are interchangeable. Please see our online catalog for product specifications and details at: www.midland-midco.com

Shallow Well Repair Parts



Description	2"	List \$	2 1/4"	List \$	2 1/2"	List \$	3"	List \$	3 1/2"	List \$	4"	List \$
Flush barrel less caps 14"	819	75.94	829	80.08	839	90.72	859	104.72	869	128.46	879	153.44
16"	8110	82.66	8210	87.92	8310	99.12	8510	114.24	8610	138.54	8710	164.64
18"	8111	89.38	8211	95.76	8311	107.52	8511	123.76	8611	148.62	8711	175.84
20"	8112	96.10	8212	103.60	8312	115.92	8512	133.28	8612	158.70	8712	187.04
22"	8113	102.82	8213	111.44	8313	124.32	8513	142.80	8613	168.78	8713	198.24
24"	8114	109.54	8214	119.28	8314	132.72	8514	152.32	8614	178.86	8714	209.44
Flush Top Cap 1 1/4"	8115	31.46	8215	35.88	8315	43.34	8515	54.10	N/A	N/A	N/A	N/A
Flush Top Cap 1 1/2"	N/A	N/A	N/A	N/A	8316	43.34	8516	54.10	N/A	N/A	N/A	N/A
Flush Top Cap 2"	N/A	N/A	N/A	N/A	N/A		8540	54.10	8640	84.82	8740	88.22
Flush Bottom Cap 1 1/4"	8117	31.46	8217	35.88	8317	43.34	8517	54.10	N/A	N/A	N/A	N/A
Flush Bottom Cap 1 1/2"	N/A	N/A	N/A	N/A	8318	43.34	8518	54.10	N/A	N/A	N/A	N/A
Flush Bottom Cap 2"	N/A	N/A	N/A	N/A	N/A	N/A	8541	54.10	8641	84.82	8741	88.22
Plunger Cage	8119	20.36	8219	23.34	8319	24.42	8519	32.62	8619	49.56	8719	56.90
Plunger Follower	8120	23.04	8220	27.00	8320	28.16	8520	36.44	8620	44.64	8720	52.52
Plunger Poppet 442	8121	9.52	8221	10.58	8321	10.86	8521	13.66	8621	18.08	8721	18.54
Plunger Poppet 444	8135	21.94	8235	23.82	8335	25.08	8535	33.28	8635	47.54	8735	60.92
Plunger Rings	8122	8.72	8222	9.42	8322	10.48	8522	12.96	8622	22.64	8722	23.56
Rod length		16"		17"		18"		19"		20"		21"
7/16" Stainless Steel Plgr Rod	8123	16.92	8223	17.28	8323	17.62	8523	17.96	8623	20.32	8723	20.66
5/8" Stainless Steel Plgr Rod	8124	22.70	8224	23.16	8324	23.64	8524	24.10	8624	24.56	8724	25.02
Hex Locking Nut - 7/16"	8125	0.82	8125	0.82	8125	0.82	8125	0.82		*		*
Hex Locking Nut - 5/8"	8225	*	8225	*	8225	*	8225	*	8225	1.42	8225	1.42
Plunger Complete #442 Cyl	8126	67.56	8226	76.28	8326	81.22	8526	105.78	8626	145.56	8726	164.76
Plunger Complete #444 Cyl	18126	83.88	18226	94.92	18326	102.20	18526	131.40	18626	180.50	18726	206.68
Flat Spider Cage	8134	9.52	8234	10.60	8334	10.78	8534	12.60	8634	19.80	8734	20.42
Check Poppet #442/444	8135	21.94	8235	23.82	8335	25.08	8535	33.28	8635	47.54	8735	60.92
Facing for 442 Ck/444 Plgr Poppt	8137	3.04	8237	3.28	8337	3.50	8537	4.06	8637	5.04	8737	5.48

SEE ONLINE CATALOG FOR MORE DETAILS @ WWW.MIDLAND-MIDCO.COM

PRICES SUBJECT TO CHANGE WITHOUT NOTICE

1889 - 129 Years of Quality & Service - 2018



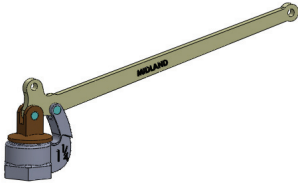


MIDLAND WATER WELL CYLINDERS

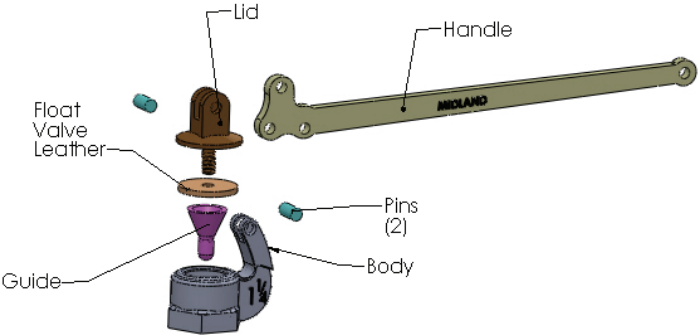
This all brass **Float Valve** has the body threaded accurately to match the size and seat on to which the lid closes. The lid is fitted with a tapering guide to ensure a perfect seating as the valve is closed and the handle of the valve is raised. Please see our online catalog for product specifications and details at: www.midland-midco.com

Midland Tank Flanges are solid brass with standard iron pipe threads and holes drilled for #6 tinner rivets, unless otherwise specified. The soldering to galvanized iron tanks and cisterns is made easy as the soldering face and edge of the flange is machined and requires no filing or smoothing. Please see our online catalog for product specifications and details at: www.midland-midco.com

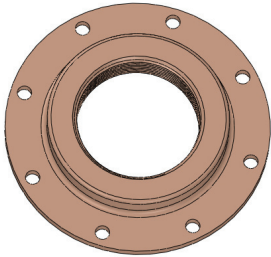
Midlands Float Valves



	1/2"		3/4"		1"		1 1/4"		1 1/2"		2"		2 1/2"		3"		4"	
	P/N	List \$	P/N	List \$	P/N	List \$	P/N	List \$	P/N	List \$	P/N	List \$	P/N	List \$	P/N	List \$	P/N	List \$
Float Valve Complete	911	47.66	912	47.66	913	63.74	914	77.34	915	92.62	916	112.94	917	172.64	918	218.90	9110	303.04
Body	9111	20.00	9112	20.28	9113	22.68	9114	29.22	9115	32.50	9116	42.52	9117	57.64	9118	75.94	9120	144.44
Handle	9211	11.54	9212	11.54	9213	13.92	9214	20.34	9215	25.10	9216	33.90	9217	38.26	9218	50.60	9220	59.34
Lid	9311	7.88	9312	7.88	9313	12.32	9314	14.50	9315	17.20	9316	20.24	9317	35.42	9318	42.62	9320	58.78
Guide	9411	5.38	9412	5.38	9413	10.12	9414	12.12	9415	13.16	9416	19.82	9417	21.92	9418	27.66	9420	46.82
Float Valve Leather	9711	1.16	9712	1.16	9713	1.24	9714	1.38	9715	1.72	9716	2.96	9717	5.58	9718	7.62	9720	11.60
Lid/Guide/Leather comp.	9811	14.88	9812	14.88	9813	26.10	9814	30.14	9815	36.40	9816	46.84	9817	63.10	9818	79.68	9820	125.80
Screws for 1/2, 3/4, & 1"	9511	0.58																
Nuts for 1/2, 3/4, & 1"	9611	0.40																
Screws for 1 1/4 & 1 1/2	9514	0.94																
Nuts for 1 1/4 & 1 1/2	9614	0.52																
Screws for 2, 2 1/2, 3 & 4	9516	1.56																
Nuts for 2, 2 1/2, 3 & 4	9616	0.64																



Midland Tank Flanges



	P/N	List \$	Size	P/N	List \$	Size	P/N	List \$
1/8"	11117	10.08	1 1/4"	11217	13.36	4"	11317	45.96
1/4"	11118	10.52	1 1/2"	11218	14.90	4 1/2"	11318	*
3/8"	11119	10.80	2"	11219	17.62	5"	11319	*
1/2"	11120	11.34	2 1/2"	11220	37.54	6"	11320	*
3/4"	11121	12.90	3"	11221	38.32			
1"	11122	13.20	3 1/2"	11222	40.28			

* Price available upon request.

SEE ONLINE CATALOG FOR MORE DETAILS @ WWW.MIDLAND-MIDCO.COM

PRICES SUBJECT TO CHANGE WITHOUT NOTICE

1889 - 129 Years of Quality & Service - 2018





MIDLAND WATER WELL CYLINDERS

Midland Regular Stuffing Boxes (heavy duty) are all brass with stainless steel rods and use square rope packing. Please see the Midland Catalog Online for specifications and ordering options at www.midland-midco.com and select 'Water Well Cylinders' and then the 'View Midland Catalog' on the left side of the page.

Midland S.L. Stuffing Boxes (heavy duty) are all brass with four V rings held in place with a steel spring. Please see the Midland Catalog Online for specifications and ordering options at www.midland-midco.com and select 'Water Well Cylinders' and then the 'View Midland Catalog' on the left side of the page.

Midland Inverted Brass Tube (heavy duty) are all brass with stainless steel rods and use cup leathers. Please see the Midland Catalog Online for specifications and ordering options at www.midland-midco.com and select 'Water Well Cylinders' and then the 'View Midland Catalog' on the left side of the page.

Midland Stuffing Boxes

Complete Regular Stuffing Boxes

Pipe Size	1-1/4"		1-1/2"		2"	
w/ 18" S.S. rod 7/16 thd.	1014	135.18	1024	145.24	1034	155.44
w/ 18" S.S. rod 5/8 thd.	2014	135.18	2024	145.24	2034	155.44

Repair Parts for Regular Stuffing Boxes

	1-1/4"		1-1/2"		2"	
Body	1013	45.76	1023	52.40	1033	56.64
Nut w/ oil bowl	1016	29.74	All parts other than body interchangeable			
Gland	1017	13.06				
S.S. rod 18" w/ 7/16" thd.	1019	33.00				
S.S. rod 18" w/ 5/8" thd.	2019	33.00				

S.L. Stuffing Boxes

Pipe Size	1-1/4"		1-1/2"		2"	
S.S. rod 18" w/7/16 thd.	10110	145.18	10210	152.40	10310	159.48
S.S. rod 18" w/ 5/8 thd.	20110	145.18	20210	152.40	20310	159.48

S.L. Repair Parts

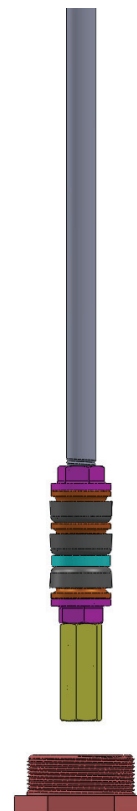
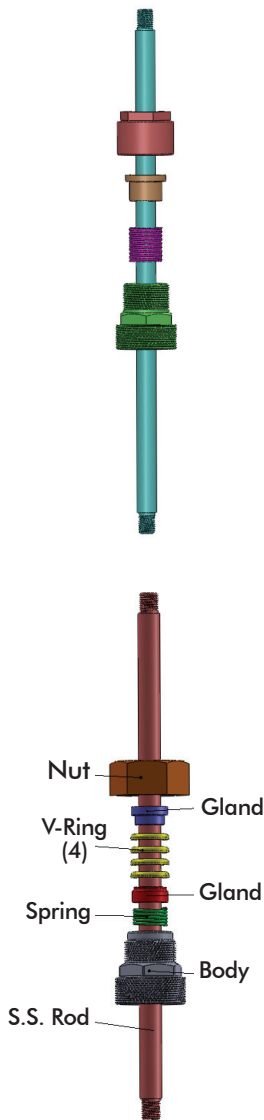
Body	10112	44.48	10212	45.98	10312	49.32
Nut	10113	36.40	All parts other than body interchangeable			
Gland 1 set top & bottom	10114	17.78				
Spring	10115	5.78				
V-ring - requires 4	10116	2.30				

Modified IBT Stuffing Boxes

#4 IBT less bushing thread 1 1/4" pipe both ends - complete	1143	163.50
#4 IBT barrel only threaded 1 1/4" pipe both ends	1144	93.12

IBT Stuffing Boxes

P/N	Complete Units	List \$
1111	#1 IBT	128.60
1121	#2 IBT	151.98
1112	#3 IBT	161.88
1113	#4 IBT 2"	204.68
1114	#4 IBT 2 1/2"	221.94
1122	#5 IBT 2 1/2"	316.20
1123	#5 IBT 3"	386.68
1115	Barrel for #1	68.64
1125	Barrel for #2	72.78
1135	Barrel for #3	78.50
1145	Barrel for #4	95.66
1155	Barrel for #5	112.12
1126	2" Bushing for #2	45.76
1126	2" Bushing for #3	45.76
1146	2" Bushing for #4	45.76
1147	2 1/2" Bushing for #4	73.22
1157	2 1/2" Bushing for #5	73.22
1158	3" Bushing for #5	116.70
11111	Nut for #1	9.72
11211	Nut for #2	10.38
11311	Nut for #3	10.38
11411	Nut for #4	10.38
11511	Nut for #5	15.12
11112	Plunger ring for #1	8.32
11212	Plunger ring for #2	8.84
11312	Plunger ring for #3	8.84
11412	Plunger ring for #4	10.22
11512	Plunger ring for #5	14.20



SEE ONLINE CATALOG FOR MORE DETAILS @ WWW.MIDLAND-MIDCO.COM

PRICES SUBJECT TO CHANGE WITHOUT NOTICE

1889 - 129 Years of Quality & Service - 2018





MIDLAND WATER WELL CYLINDERS

Midland Heavy Service Boxes (extra heavy duty) are all brass with stainless steel rods and use square rope packing. Please see the Midland Catalog Online for specifications and ordering options at www.midland-midco.com and select 'Water Well Cylinders' and then the 'View Midland Catalog' on the left side of the page

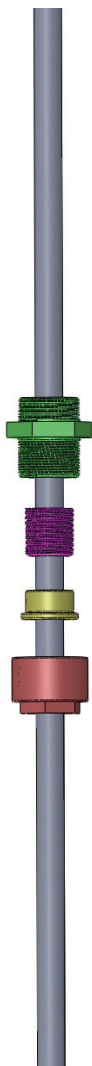
Midland Stuffing Boxes Continued

Heavy Service Packing Boxes

Pipe Size	2"		2-1/2"		3"	
S.S. rod 48" w/ 7/8" thrd	1044	368.84	1054	405.20	1064	412.76
H.S. Repair Parts						
Body	1043	109.70	1053	136.32	1063	140.26
Nut	1046	78.26	1056	98.72	1056	98.72
Gland	1047	39.74	1057	40.34	1057	40.34
S.S. rod 48" w/7/8" thd.	1049	128.50	Rods are universal for H.S.			

IBT Stuffing Boxes

P/N		List \$
11115	Couplings for #1	4.72
11215	Couplings for #2	5.26
11315	Couplings for #3	5.26
11415	Couplings for #4	5.26
11515	Couplings for #5	8.40
11110	Flat Spacers for #1	4.92
11210	Flat Spacers for #2	4.92
11310	Flat Spacers for #3	4.92
11410	Flat Spacers for #4	5.60
11510	Flat Spacers for #5	5.82
11114	S.S. Plunger rod #1	11.66
11214	S.S. Plunger rod #2	13.98
11314	S.S. Plunger rod #3	16.32
11414	S.S. Plunger rod #4	16.32
11514	S.S. Plunger rod #5	23.30
1119	#1 Plunger Complete	78.98
1129	#2 Plunger Complete	80.26
1139	#3 Plunger Complete	82.72
1149	#4 Plunger Complete	90.18
1159	#5 Plunger Complete	128.84



SEE ONLINE CATALOG FOR MORE DETAILS @ WWW.MIDLAND-MIDCO.COM

PRICES SUBJECT TO CHANGE WITHOUT NOTICE

1889 - 129 Years of Quality & Service - 2018





MIDLAND WATER WELL CYLINDERS

Midland Coupling Adaptors are made using 304 stainless steel and allows you to connect virtually all size components along the sucker rod quickly and easily. www.midland-midco.com

Stainless Steel Coupling Adaptors

Standard

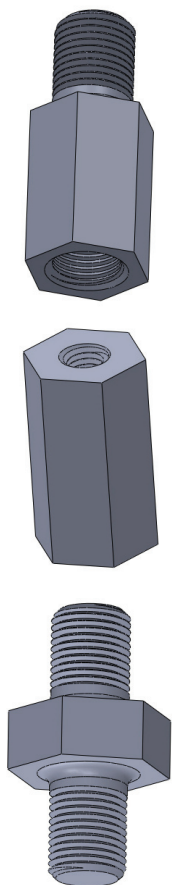
Diameter	Length	Description	Part #	List \$
5/8M	7/16F	5/8 NC M x 7/16 NC F	371308	21.22
5/8M	7/8M	5/8 NC M x 7/8 NC M	371314	21.22
7/8M	5/8F	7/8 NC M x 5/8 NC F	371325	21.22
5/8M NC	1/2F NPT	5/8 NC M x 1/2 NPT F	371332	21.22
7/8M NC	3/8F NPT	7/8 NC M x 3/8 NPT F	371330	21.22
7/8M NC	1/2F NPT	7/8 NC M x 1/2 NPT F	371327	21.22

Optional

3/8F	3/8F	3/8 NC F x 3/8 NC F	371343	22.00
3/8F	7/16F	3/8 NC F x 7/16 NC F	371342	22.00
3/8M	5/8F	3/8 NC M x 5/8 NC F	371338	22.00
3/8F	7/8M	3/8 NC F x 7/8 NC M	371339	22.00
7/16F	3/8M	7/16 NC F x 3/8 NC M	371331	22.00
7/16F	7/16F	7/16 NC F x 7/16 NC F	371305	22.00
7/16F	1/2F	7/16 NC F x 1/2 NC F	371310	22.00
7/16M	1/2F	7/16 NC M x 1/2 NC F	371311	22.00
7/16F	5/8F	7/16 NC F x 5/8 NC F	371307	22.00
7/16M	5/8F	7/16 NC M x 5/8 NC F	371306	22.00
7/16M	7/8F	7/16 NC M x 7/8 NC F	371309	22.00
1/2M	7/16F	1/2 NC M x 7/16 NC F	371312	22.00
1/2F	7/8M	1/2 NC F x 7/8 NC M	371337	22.00
5/8M	3/8F	5/8 NC M x 3/8 NC F	371324	22.00
5/8M	1/2F	5/8 NC M x 1/2 NC F	371316	22.00
5/8F	1/2F	5/8 NC F x 1/2 NC F	371318	22.00

Optional

5/8M	5/8F	5/8 NC M x 5/8 NC F	371336	22.00
5/8M	5/8M	5/8 NC M x 5/8 NC M	371323	22.00
5/8F	5/8F	5/8 NC F x 5/8 NC F	371335	22.00
5/8M	3/4F	5/8 NC M x 3/4 NC F	371320	22.00
5/8M	7/8F	5/8 NC M x 7/8 NC F	371315	22.00
3/4M	5/8F	3/4 NC M x 5/8 NC F	371319	22.00
3/4F	5/8F	3/4 NC F x 5/8 NC F	371348	22.00
7/8M	7/16F	7/8 NC M x 7/16 NC F	371313	22.00
7/8F	5/8F	7/8 NC F x 5/8 NC F	371317	22.00
7/8M	7/8M	7/8 NC M x 7/8 NC M	371326	22.00
7/8M	7/8F	7/8 NC M x 7/8 NC F	371334	22.00
7/8F	7/8F	7/8 NC F x 7/8 NC F	371321	22.00
1M	5/8F	1 NC M x 5/8 NC F	371340	22.00
1M	7/8F	1 NC M x 7/8 NC F	371341	22.00
3/8F NC	1/2F NPT	3/8 NC F x 1/2 NPT F	371328	22.00
7/16M NC	1/2F NPT	7/16 NC M x 1/2 NPT F	371349	22.00
7/16F NC	1/2F NPT	7/16 NC F x 1/2 NPT F	371352	22.00
5/8M NC	3/8F NPT	5/8 NC M x 3/8 NPT F	371329	22.00
5/8F NC	3/8M NPT	5/8 NC F x 3/8 NPT M	371344	22.00
5/8M NC	1/2M NPT	5/8 NC M x 1/2 NPT M	371347	22.00
5/8F NC	1/2M NPT	5/8 NC F x 1/2 NPT M	371333	22.00
7/8F NC	3/8M NPT	7/8 NC F x 3/8 NPT M	371345	22.00
7/8F NC	1/2M NPT	7/8 NC F x 1/2 NPT M	371346	22.00
1M NC	1/2F NPT	1 NC M x 1/2 NPT F	371350	22.00
5/8F NC	3/8F NC	5/8 NC F x 3/8 NC F	371322	22.00
5/8F NC	1/2F NPT	5/8 NC F x 1/2 NPT F	371353	22.00
5/8F NC	3/4F NPT	5/8 NC F x 3/4 NPT F	371354	22.00
3/8F NC	7/16M NC	3/8 NC F x 7/16 NC M	371355	22.00



SEE ONLINE CATALOG FOR MORE DETAILS @ WWW.MIDLAND-MIDCO.COM

PRICES SUBJECT TO CHANGE WITHOUT NOTICE

1889 - 129 Years of Quality & Service - 2018

