



MIDLAND MFG CO.

ESTABLISHED 1889 - FORT WORTH



MIDLAND WELL CYLINDERS

DEEP WELL, SHALLOW WELL & HEAVY WALL CYLINDERS
FLOAT VALVES, TANK FLANGES, STUFFING BOXES

PRICE BOOK
February 2016

MIDLAND MANUFACTURING COMPANY

4800 Esco Drive

Fort Worth, Texas 76140

817-478-4848 | Fax 817-483-9815

www.midland-midco.com

MANUFACTURING
WATER WELL CYLINDERS
FOR OVER 128 YEARS

LEADING THE INDUSTRY WITH OUR QUALITY & SERVICE



2016 MIDLAND WATER WELL CYLINDERS PRICE BOOK

Shipping Discounts & Warranty

SHIPPING PROGRAM

Prepaid freight is available on \$2500 net orders or larger. All discounts subject to change without notice. Shipping orders over \$2500 to locations outside of the continental US is FREE to our designated port or border city; Seattle for Alaska shipments, San Diego for Hawaii shipments, etc. The current price book, product catalog, and product details are also available @ www.midland-midco.com and hard back binder price books are available upon request.

All Midland & MIDCO products and components are manufactured in the UNITED STATES OF AMERICA and are fully compliant with NSF 61 Annex G Standard 372 - Safe Drinking Water Act & Public Law 111-380, the "BUY AMERICAN" section 1605 of the ARRA of 2009, LEED 2009, FHWA Buy America, AIS, Conflict Minerals Requirements, and Recycled Materials Certifications.

WARRANTY

Goods manufactured by Midland Manufacturing Company which are found to be defective will be replaced at no charge upon written notice and receipt of defective parts. Since we have no control over the manner in which our equipment is installed and/or used, warranty obligations apply only when Midland products are used for the intended purpose in accordance with acceptable installation and operating practices. We are not responsible for labor or any other costs incurred in replacing or repairing damages, either direct or indirect, due to products of our manufacture. The amount of damage is limited to the price of defective goods only.



MIDLAND WATER WELL CYLINDERS

All brass **Deep Well #449** open top cylinders are made with 11 Gauge (.125 wall) seamless brass tubing; available with solid bronze BALL valves or SPOOL valves. Select 3 leathers or 4 leathers on your plunger valve. Plungers are tapped in bottom so they can screw onto the check valve for easy removal. The #449 caps are not interchangeable with #852 barrels. Longer strokes are available upon request. Please see our online catalog for product specifications and details at: www.midland-midco.com

#449 11 Gauge Prices



Inside Diameter	Barrel Length	Stroke	#449				#449B				Repair Barrels			
			P/N	3 Leather Spool Plunger	P/N	4 Leather Spool Plunger	P/N	3 Leather Ball Plunger	P/N	4 Leather Ball Plunger	P/N	BLC Barrels less Caps	P/N	BWC Barrels With Caps
1-3/8"	18	10	211	268.00	221	N/A	231	261.00	241	N/A	251	81.00	261	135.00
	24	17	212	289.00	222	N/A	232	282.00	242	N/A	252	102.00	262	156.00
	30	23	213	310.00	223	N/A	233	303.00	243	N/A	253	123.00	263	177.00
1-7/8"	18	8	214	294.00	224	326.00	234	297.00	244	330.00	254	100.00	264	172.00
	24	14	215	317.00	225	349.00	235	320.00	245	353.00	255	123.00	265	195.00
	30	20	216	340.00	226	372.00	236	343.00	246	376.00	256	146.00	266	218.00
	36	26	217	363.00	227	395.00	237	366.00	247	399.00	257	169.00	267	241.00
	42	32	218	386.00	228	418.00	238	389.00	248	422.00	258	192.00	268	264.00
2-1/4"	24	13	219	393.00	229	455.00	239	416.00	249	456.00	259	139.00	269	246.00
	30	19	2110	426.00	2210	488.00	2310	449.00	2410	489.00	2510	172.00	2610	279.00
	36	26	2111	459.00	2211	521.00	2311	482.00	2411	522.00	2511	205.00	2611	312.00
	42	31	2112	492.00	2212	554.00	2312	515.00	2412	555.00	2512	238.00	2612	345.00
2-3/4"	24	12	2113	585.00	2213	634.00	2313	608.00	2413	669.00	2513	186.00	2613	338.00
	30	18	2114	622.00	2214	671.00	2314	645.00	2414	706.00	2514	223.00	2614	375.00
	36	24	2115	659.00	2215	708.00	2315	682.00	2415	743.00	2515	260.00	2615	412.00
	42	30	2116	696.00	2216	745.00	2316	719.00	2416	780.00	2516	297.00	2616	449.00
	48	36	2117	733.00	2217	782.00	2317	756.00	2417	817.00	2517	334.00	2617	486.00
3-3/4"	36	20	2118	1,045.00	2218	1,115.00	2318	1,210.00	2418	1,276.00	2518	279.00	2618	460.00
	42	26	2119	1,103.00	2219	1,173.00	2319	1,268.00	2419	1,334.00	2519	337.00	2619	518.00
	48	32	2120	1,161.00	2220	1,231.00	2320	1,326.00	2420	1,392.00	2520	395.00	2620	576.00
	54	38	2121	1,219.00	2221	1,289.00	2321	1,384.00	2421	1,450.00	2521	453.00	2621	634.00
	60	44	2122	1,277.00	2222	1,347.00	2322	1,442.00	2422	1,508.00	2522	511.00	2622	692.00

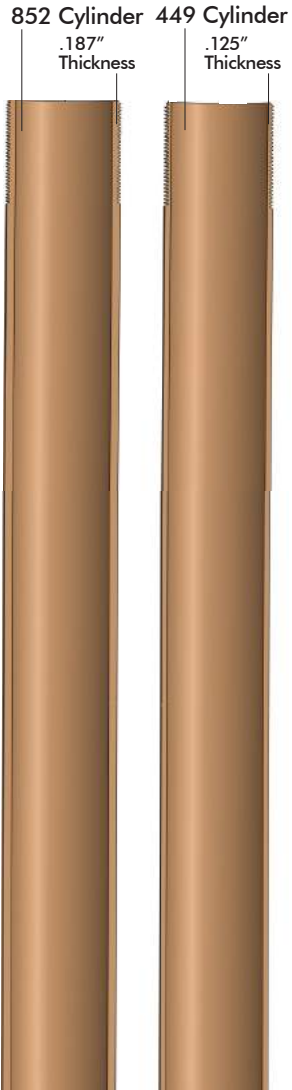




MIDLAND WATER WELL CYLINDERS

All brass Heavy Barrel #852 (Deep Well) open top cylinders are made with 10 Gauge (.187 wall) seamless brass tubing; available with solid bronze BALL valves or SPOOL valves. Select 3 leathers or 4 leathers on your plunger valve. Plungers are tapped in bottom so they can screw onto the check valve for easy removal. The #852 caps are not interchangeable with #449 barrels. Longer strokes are available upon request. Please see our online catalog for product specifications and details at: www.midland-midco.com

Heavy Barrel #852 Prices



			#852				#852B				Repair Barrels			
Inside Diameter	Barrel Length	Stroke	P/N	3 Leather Spool Plunger	4 Leather Spool Plunger	P/N	3 Leather Ball Plunger	4 Leather Ball Plunger	P/N	P/N	P/N	BLC	P/N	BWC
				P/N	Barrels less Caps		Barrels With Caps							
1 7/8"	24	12	8012	361.00	8022	395.00	8032	357.00	8042	378.00	8052	147.00	8062	222.00
	30	18	8013	394.00	8023	428.00	8033	390.00	8043	411.00	8053	180.00	8063	255.00
	36	24	8014	427.00	8024	461.00	8034	423.00	8044	444.00	8054	213.00	8064	288.00
	42	30	8015	460.00	8025	494.00	8035	456.00	8045	477.00	8055	246.00	8065	321.00
	48	36	8016	493.00	8026	527.00	8036	489.00	8046	510.00	8056	279.00	8066	354.00
2 1/4"	24	13	8018	475.00	8028	495.00	8038	469.00	8048	501.00	8058	167.00	8068	284.00
	30	19	8019	512.00	8029	532.00	8039	506.00	8049	538.00	8059	204.00	8069	321.00
	36	26	80110	549.00	80210	569.00	80310	543.00	80410	575.00	80510	241.00	80610	358.00
	42	31	80111	586.00	80211	606.00	80311	580.00	80411	612.00	80511	278.00	80611	395.00
	48	37	80112	623.00	80212	643.00	80312	617.00	80412	649.00	80512	315.00	80612	432.00
2 3/4"	24	12	80113	635.00	80213	681.00	80313	659.00	80413	698.00	80513	207.00	80613	394.00
	30	18	80114	677.00	80214	723.00	80314	701.00	80414	740.00	80514	249.00	80614	436.00
	36	24	80115	719.00	80215	765.00	80315	743.00	80415	782.00	80515	291.00	80615	478.00
	42	30	80116	761.00	80216	807.00	80316	785.00	80416	824.00	80516	333.00	80616	520.00
	48	36	80117	803.00	80217	849.00	80317	827.00	80417	866.00	80517	375.00	80617	562.00
3 3/4"	30	18	80118	1,126.00	80218	1,183.00	80318	1,271.00	80418	1,322.00	80518	318.00	80618	517.00
	36	20	80119	1,184.00	80219	1,241.00	80319	1,329.00	80419	1,380.00	80519	376.00	80619	575.00
	42	26	80120	1,242.00	80220	1,299.00	80320	1,387.00	80420	1,438.00	80520	434.00	80620	633.00
	48	32	80121	1,300.00	80221	1,357.00	80321	1,445.00	80421	1,496.00	80521	492.00	80621	691.00





MIDLAND WATER WELL CYLINDERS

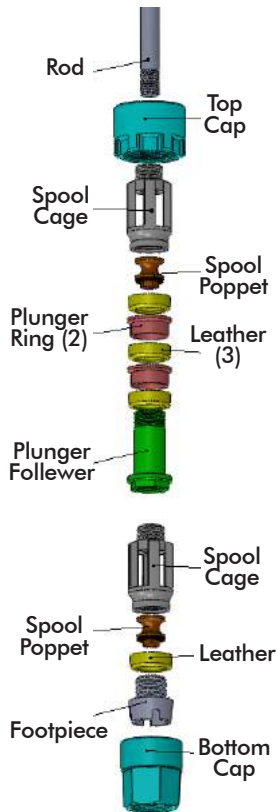
All Deep Well Repair Parts can be used for both #449 and #852 cylinders, except for the top caps and bottom caps which are not interchangeable. Please see our online catalog for product specifications and details at: www.midland-midco.com



Deep Well Repair Parts

For #449 & #852 Cylinders

Part Description	1-3/8"	List \$	1-7/8"	List \$	2-1/4"	List \$	2-3/4"	List \$	3-3/4"	List \$
11 Gauge Top Cap for #449	3122	28.30	3222	39.10	3322	60.70	3422	82.54	3522	138.12
11 Gauge Bottom Cap for #449	3123	31.78	3223	44.60	3323	67.82	3423	85.78	3523	150.48
Top Cap for #852	N/A	*	80724	39.10	80726	60.70	80728	82.54	80730	138.12
Bottom Cap for #852	N/A	*	80725	44.60	80727	67.82	80729	85.78	80731	156.50
Spool Plunger Valve complete										
3 Leather	3126	92.44	3226	115.64	3326	138.20	3426	197.60	3526	398.32
4 Leather	N/A	*	3227	145.34	3327	170.34	3427	238.06	3527	475.40
Ball Plunger Valve complete										
3 Leather	3128	90.44	3228	116.80	3328	148.30	3428	230.54	3528	514.78
4 Leather	n/a	*	3229	146.52	3329	180.90	3429	270.68	3529	590.26
Spool Check Valve complete	3130	70.52	3230	81.90	3330	107.02	3430	144.62	3530	296.20
Ball Check Valve complete	3131	66.06	3231	86.74	3331	115.82	3431	187.32	3531	423.92
Spool Plunger/Check Cage	3132	30.92	3232	37.86	3332	49.96	3432	70.02	3532	129.04
Ball Plunger/Check Cage	3133	31.38	3233	37.86	3333	50.00	3433	70.02	3533	129.04
Plunger Follower 3 leather	3134	24.96	3234	28.90	3334	34.28	3434	48.88	3534	113.48
Plunger Follower 4 leather	N/A	*	3235	46.14	3335	52.22	3435	68.34	3535	154.44
Plunger Ring	3136	7.62	3236	8.74	3336	10.66	3436	16.44	3536	25.88
Footpiece (check bottom)	3139	23.00	3239	24.96	3339	32.62	3439	41.44	3539	85.74
Spool Poppet Complete	3140	15.90	3240	19.14	3340	22.02	3440	29.44	3540	67.82
Spool Poppet Nut	3141	0.74	3241	0.90	3341	1.14	3441	1.38	3541	2.50
Spool Poppet Washer	3142	2.08	3242	2.60	3342	2.82	3442	3.12	3542	3.92
Bronze Balls	3143	7.90	3243	20.38	3343	28.30	3443	72.76	3543	200.52
Size Ball Inches	3/4"		1-1/16"		1-5/16"		1-3/4"		2-1/2"	



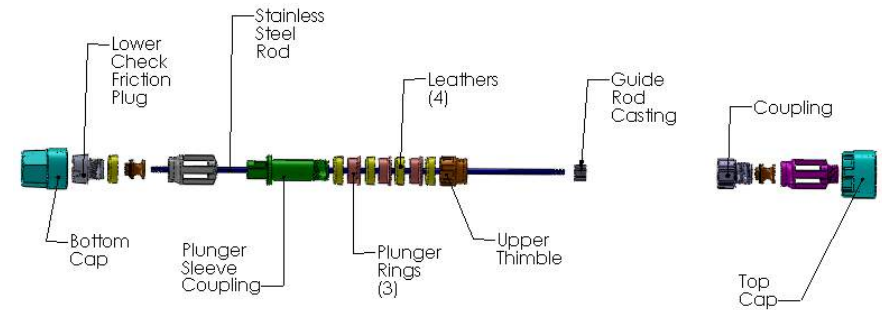


MIDLAND WATER WELL CYLINDERS

E-Z Pull Cylinders are designed to make the pulling of the lower check valve easy by attaching the lower spool with a stainless steel rod which is also attached to the plunger valve. When the plunger valve is withdrawn it opens the lower check valve releasing the water which is then withdrawn with the plunger valve. The up and down movement or jarring motion of the rods (not a steady pull) enable the removal of the lower valve. The lower check valve can be cleaned by raising the spool off the seat slightly and letting the water inside the pipe flush back thru the lower valve. E-Z Pull Cylinders are available in 11 Gauge #449 and 10 Gauge #852. The plunger pipe is 6" shorter than the cylinder; the guide rod is the same length as the cylinder barrel. Please see our online catalog for product specifications and details at: www.midland-midco.com

E-Z Pull Cylinders

Inside Diameter	Barrel Length	Stroke	P/N	#449	P/N	#852	P/N	Complete #19 Plunger Assembly
				11 Gauge Barrel		10 Gauge Heavy Barrel		
1-7/8"	24	12	411	413.00	8072	470.00	421	261.00
	30	18	412	436.00	8073	503.00	422	275.00
	36	24	413	459.00	8074	536.00	423	290.00
	42	30	414	482.00	8075	569.00	424	304.00
2-1/4"	48	36	415	505.00	8076	602.00	425	319.00
	24	10	416	511.00	8077	590.00	426	338.00
	30	16	417	544.00	8078	627.00	427	361.00
	36	22	418	577.00	8079	664.00	428	384.00
2-3/4"	42	28	419	610.00	80710	701.00	429	407.00
	48	34	4110	643.00	80711	738.00	4210	430.00
	24	6	4111	685.00	80712	764.00	4211	387.00
	30	12	4112	722.00	80713	822.00	4212	414.00
2-3/4"	36	18	4113	759.00	80714	880.00	4213	441.00
	42	24	4114	796.00	80715	938.00	4214	468.00
	48	30	4115	833.00	80716	996.00	4215	495.00



Length of Cylinder	24"	30"	36"	42"	48"					
* #4 Plunger pipe - 1 7/8"	4131	31.20	4132	41.60	4133	52.00	4134	62.40	4135	72.80
* #4 Plunger pipe - 2 1/4"	4231	37.44	4232	49.92	4233	62.40	4234	74.88	4235	87.36
* #4 Plunger pipe - 2 3/4"	4331	43.68	4332	58.24	4333	72.80	4334	87.36	4335	101.92
** #10 SS Guide Rod - all sizes same	4136	33.70	4137	42.12	4138	50.54	4139	58.98	4140	67.40

E-Z Pull Repair Parts

Description	P/N	1-7/8"	P/N	2-1/4"	P/N	2-3/4"
#1 Upper check cage	4116	36.15	4216	51.60	4316	69.88
#2 Upper check spool complete	4117	19.48	4217	21.40	4317	30.36
#3 Upper thimble	4118	24.25	4218	31.88	4318	42.04
#3A Upper check assembly	4119	72.95	4219	96.12	4319	129.96
#4 Plunger pipe - per foot						*
#5 Plunger sleeve coupling	4121	16.56	4221	25.02	4321	29.58
#6 Plunger sleeve	4122	32.24	4222	53.96	4322	60.98
#7 Plunger rings	4123	7.62	4223	8.74	4323	10.66
#9 Plunger complete assembly	4124	85.40	4224	122.58	4324	151.76
#10 SS Guide rod - per foot						**
#11 Guide rod casting	4126	7.08	4226	7.64	4326	8.26
#12 Lower check cage	4127	38.64	4227	39.62	4327	50.52
#13 Lower check friction plug	4128	23.64	4228	31.88	4328	42.36
#14 Lower check spool complete	4129	22.14	4229	25.48	4329	35.40
#15A Lower check assembly-L/Rod	4130	81.96	4230	95.98	4330	122.82

* See table above for details.

** See table above for details.





MIDLAND WATER WELL CYLINDERS

The **Shallow Well #442 and #444** are closed top cylinders designed for smaller diameter shallow depth wells made with 11 Gauge seamless brass tubing. The #442 plunger is all brass with hemispherical poppet; the check poppet is fitted with a special facing for a secure seal. The #444 has a special facing on both the check and plunger poppet. A 2" clearance is provided for operation at each stroke specified. Please see our online catalog for product specifications and details at: www.midland-midco.com

Shallow Well #442 and #444



Cylinder I.D.	Length & Std Pipe Connections	Stroke	#442		#444													
			P/N	List \$	P/N	List \$	Pipe Cap Size Option	Stroke	P/N	#442	P/N	#444						
2"	x 12" x 1-1/4"	5	611	203.00	621	217.00												
	x 14" x 1-1/4"	6	612	209.00	622	223.00												
	x 16" x 1-1/4"	8	613	215.00	623	229.00												
	x 18" x 1-1/4"	10	614	221.00	624	235.00												
	x 20" x 1-1/4"	12	615	227.00	625	241.00												
2-1/4"	x 12" x 1-1/4"	5	616	227.00	626	243.50												
	x 14" x 1-1/4"	6	617	233.50	627	250.00												
	x 16" x 1-1/4"	8	618	240.00	628	256.50												
	x 18" x 1-1/4"	10	619	246.50	629	263.00												
	x 20" x 1-1/4"	12	6110	253.00	6210	269.50												
2-1/2"	x 12" x 1-1/4"	5	6111	245.00	6211	264.00	x 12" x 1-1/2"	5	16111	245.00	16211	264.00						
	x 14" x 1-1/4"	6	6112	252.00	6212	271.00	x 14" x 1-1/2"	6	16112	252.00	16212	271.00						
	x 16" x 1-1/4"	8	6113	259.00	6213	278.00	x 16" x 1-1/2"	8	16113	259.00	16213	278.00						
	x 18" x 1-1/4"	10	6114	266.00	6214	285.00	x 18" x 1-1/2"	10	16114	266.00	16214	285.00						
	x 20" x 1-1/4"	12	6115	273.00	6215	292.00	x 20" x 1-1/2"	12	16115	273.00	16215	292.00						
3"	x 12" x 1-1/2"	5	6121	325.00	6221	348.00	x 12" x 1-1/4"	5	16121	325.00	16221	348.00	x 12" x 2"	5	26121	325.00	26221	348.00
	x 14" x 1-1/2"	6	6122	333.50	6222	356.50	x 14" x 1-1/4"	6	16122	333.50	16222	356.50	x 14" x 2"	6	26122	333.50	26222	356.50
	x 16" x 1-1/2"	8	6123	342.00	6223	365.00	x 16" x 1-1/4"	8	16123	342.00	16223	365.00	x 16" x 2"	8	26123	342.00	26223	365.00
	x 18" x 1-1/2"	10	6124	350.50	6224	373.50	x 18" x 1-1/4"	10	16124	350.50	16224	373.50	x 18" x 2"	10	26124	350.50	26224	373.50
	x 20" x 1-1/2"	12	6125	359.00	6225	382.00	x 20" x 1-1/4"	12	16125	359.00	16225	382.00	x 20" x 2"	12	26125	359.00	26225	382.00
3-1/2"	x 12" x 2"	5	6126	432.00	6226	466.00												
	x 14" x 2"	7	6127	441.00	6227	475.00												
	x 16" x 2"	9	6128	450.00	6228	484.00												
	x 18" x 2"	11	6129	459.00	6229	493.00												
	x 20" x 2"	13	6130	468.00	6230	502.00												
4"	x 12" x 2"	5	6131	540.00	6231	577.00												
	x 14" x 2"	7	6132	550.00	6232	587.00												
	x 16" x 2"	9	6133	560.00	6233	597.00												
	x 18" x 2"	11	6134	570.00	6234	607.00												
	x 20" x 2"	13	6135	580.00	6235	617.00												

SEE ONLINE CATALOG FOR MORE DETAILS @ WWW.MIDLAND-MIDCO.COM

PRICES SUBJECT TO CHANGE WITHOUT NOTICE

1889 - 128 Years of Quality & Service - 2016

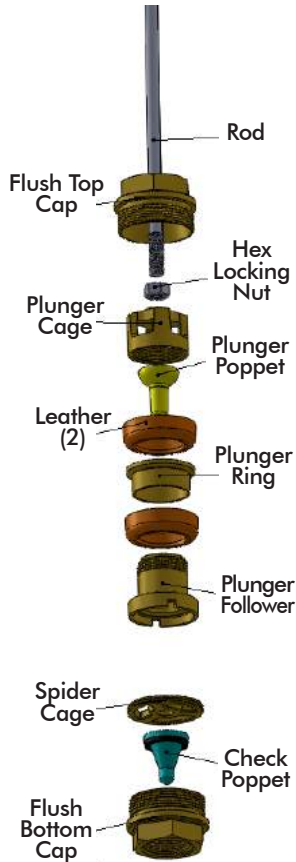




MIDLAND WATER WELL CYLINDERS

All **Shallow Well Repair Parts** can be used for both #442 and #444 cylinders. Select your choice of hemispherical (#442) or faced poppet (#444) for the plunger, which are interchangeable. Please see our online catalog for product specifications and details at: www.midland-midco.com

Shallow Well Repair Parts



Description	2"	List \$	2 1/4"	List \$	2 1/2"	List \$	3"	List \$	3 1/2"	List \$	4"	List \$
Flush barrel less caps 12"	818	61.80	828	64.50	838	73.50	858	85.00	868	105.70	878	127.00
14"	819	67.80	829	71.50	839	81.00	859	93.50	869	114.70	879	137.00
16"	8110	73.80	8210	78.50	8310	88.50	8510	102.00	8610	123.70	8710	147.00
18"	8111	79.80	8211	85.50	8311	96.00	8511	110.50	8611	132.70	8711	157.00
20"	8112	85.80	8212	92.50	8312	103.50	8512	119.00	8612	141.70	8712	167.00
22"	8113	91.80	8213	99.50	8313	111.00	8513	127.50	8613	150.70	8713	177.00
24"	8114	97.80	8214	106.50	8314	118.50	8514	136.00	8614	159.70	8714	187.00
Flush Top Cap 1 1/4"	8115	28.08	8215	32.04	8315	38.70	8515	48.30	N/A	N/A	N/A	N/A
Flush Top Cap 1 1/2"	N/A	N/A	N/A	N/A	8316	38.70	8516	48.30	N/A	N/A	N/A	N/A
Flush Top Cap 2"	N/A	N/A	N/A	N/A	N/A	N/A	8540	48.30	8640	75.72	8740	78.76
Flush Bottom Cap 1 1/4"	8117	28.08	8217	32.04	8317	38.70	8517	48.30	N/A	N/A	N/A	N/A
Flush Bottom Cap 1 1/2"	N/A	N/A	N/A	N/A	8318	38.70	8518	48.30	N/A	N/A	N/A	N/A
Flush Bottom Cap 2"	N/A	N/A	N/A	N/A	N/A	N/A	8541	48.30	8641	75.72	8741	78.76
Plunger Cage	8119	18.18	8219	20.84	8319	21.80	8519	29.12	8619	43.36	8719	50.80
Plunger Follower	8120	20.56	8220	24.10	8320	25.14	8520	32.54	8620	39.86	8720	45.10
Plunger Poppet	8121	8.50	8221	9.44	8321	9.70	8521	12.20	8621	12.56	8721	16.56
Plunger Rings	8122	7.78	8222	8.40	8322	9.36	8522	11.56	8622	16.64	8722	18.36
Rod length		16"		17"		18"		19"		20"		21"
7/16" Stainless Steel Plgr Rod	8123	15.10	8223	15.42	8323	15.72	8523	16.04	8623	16.36	8723	16.66
5/8" Stainless Steel Plgr Rod	8124	20.26	8224	20.68	8324	21.10	8524	21.52	8624	21.92	8724	22.34
Hex Locking Nut - 7/16"	8125	0.72	8125	0.72	8125	0.72	8125	0.72		*		*
Hex Locking Nut - 5/8"	8225	*	8225	*	8225	*	8225	*	8225	1.26	8225	1.26
Plunger Complete #442 Cyl	8126	60.32	8226	68.10	8326	72.52	8526	94.44	8626	129.96	8726	147.10
Plunger Complete #444 Cyl	18126	74.88	18226	84.74	18326	91.24	18526	117.32	18626	161.16	18726	184.54
Flat Spider Cage	8134	8.50	8234	9.28	8334	9.62	8534	11.24	8634	17.68	8734	18.22
Ck & Plgr Poppet #442/444	8135	19.58	8235	21.26	8335	22.38	8535	29.70	8635	42.44	8735	49.92
Facing #442 Ck & Plgr Poppet	8137	2.70	8237	2.92	8337	3.12	8537	3.62	8637	4.50	8737	4.88

SEE ONLINE CATALOG FOR MORE DETAILS @ WWW.MIDLAND-MIDCO.COM

PRICES SUBJECT TO CHANGE WITHOUT NOTICE

1889 - 128 Years of Quality & Service - 2016





MIDLAND WATER WELL CYLINDERS

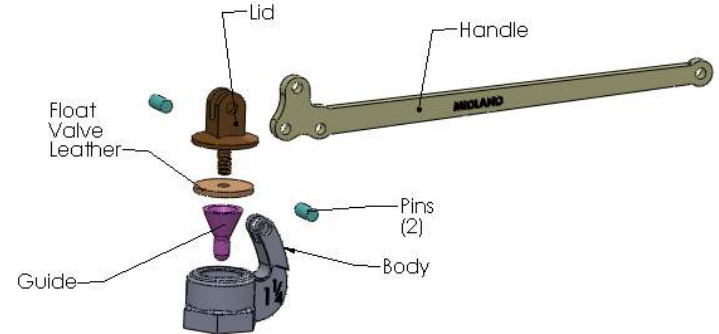
This all brass **Float Valve** has the body threaded accurately to match the size and seat on to which the lid closes. The lid is fitted with a tapering guide to ensure a perfect seating as the valve is closed and the handle of the valve is raised. Please see our online catalog for product specifications and details at: www.midland-midco.com

Midland Tank Flanges are solid brass with standard iron pipe threads and holes drilled for #6 tinner rivets, unless otherwise specified. The soldering to galvanized iron tanks and cisterns is made easy as the soldering face and edge of the flange is machined and requires no filing or smoothing. Please see our online catalog for product specifications and details at: www.midland-midco.com

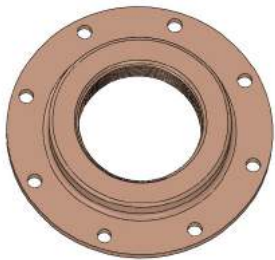
Midlands Float Valves



	1/2"		3/4"		1"		1 1/4"		1 1/2"		2"		2 1/2"		3"		4"	
	P/N	List \$	P/N	List \$	P/N	List \$	P/N	List \$	P/N	List \$	P/N	List \$	P/N	List \$	P/N	List \$	P/N	List \$
Float Valve Complete	911	42.56	912	42.56	913	56.90	914	69.06	915	82.70	916	100.84	917	154.14	918	195.44	9110	270.56
Body	9111	17.86	9112	18.10	9113	20.24	9114	26.08	9115	29.02	9116	32.60	9117	51.46	9118	67.80	9120	128.96
Handle	9211	10.30	9212	10.30	9213	12.42	9214	18.16	9215	22.40	9216	30.26	9217	34.16	9218	45.18	9220	52.98
Lid	9311	7.04	9312	7.04	9313	11.00	9314	12.94	9315	15.36	9316	18.06	9317	31.62	9318	38.04	9320	52.48
Guide	9411	4.80	9412	4.80	9413	9.04	9414	10.82	9415	11.74	9416	12.34	9417	19.56	9418	24.70	9420	41.80
Float Valve Leather	9711	1.04	9712	1.04	9713	1.10	9714	1.22	9715	1.54	9716	2.64	9717	4.98	9718	6.80	9720	10.36
Lid/Guide/Leather comp.	9811	13.28	9812	13.28	9813	23.30	9814	26.90	9815	32.50	9816	36.46	9817	56.34	9818	71.14	9820	112.32
Screws for 1/2, 3/4, & 1"	9511	0.52																
Nuts for 1/2, 3/4, & 1"	9611	0.36																
Screws for 1 1/4 & 1 1/2"	9514	0.84																
Nuts for 1 1/4 & 1 1/2"	9614	0.46																
Screws for 2, 2 1/2, 3 & 4"	9516	1.38																
Nuts for 2, 2 1/2, 3 & 4"	9616	0.56																



Midland Tank Flanges



Size	P/N	List \$	Size	P/N	List \$	Size	P/N	List \$
1/8"	11117	8.62	1 1/4"	11217	12.14	4"	11317	41.78
1/4"	11118	9.28	1 1/2"	11218	13.54	4 1/2"	11318	*
3/8"	11119	9.82	2"	11219	16.02	5"	11319	*
1/2"	11120	10.30	2 1/2"	11220	34.12	6"	11220	*
3/4"	11121	10.82	3"	11221	34.84			
1"	11122	11.08	3 1/2"	11222	36.62			

* Price available upon request.

SEE ONLINE CATALOG FOR MORE DETAILS @ WWW.MIDLAND-MIDCO.COM

PRICES SUBJECT TO CHANGE WITHOUT NOTICE

1889 - 128 Years of Quality & Service - 2016





MIDLAND WATER WELL CYLINDERS

Midland Regular Stuffing Boxes (heavy duty) are all brass with stainless steel rods and use square rope packing. Please see the Midland Catalog Online for specifications and ordering options at www.midland-midco.com and select 'Water Well Cylinders' and then the 'View Midland Catalog' on the left side of the page.

Midland S.L. Stuffing Boxes (heavy duty) are all brass with four V rings held in place with a steel spring. Please see the Midland Catalog Online for specifications and ordering options at www.midland-midco.com and select 'Water Well Cylinders' and then the 'View Midland Catalog' on the left side of the page.

Midland Inverted Brass Tube (IBT) Stuffing Boxes (heavy duty) are all brass with stainless steel rods and use cup leathers. Please see the Midland Catalog Online for specifications and ordering options at www.midland-midco.com and select 'Water Well Cylinders' and then the 'View Midland Catalog' on the left side of the page.

Midland Stuffing Boxes

Complete Regular Stuffing Boxes

Pipe Size	1-1/4"		1-1/2"		2"	
w/ 18" S.S. rod 7/16 thd.	1014	122.88	1024	132.04	1034	141.30
w/ 18" S.S. rod 5/8 thd.	2014	122.88	2024	132.04	2034	141.30

Repair Parts for Regular Stuffing Boxes

	1-1/4"		1-1/2"		2"	
Body	1013	41.60	1023	47.64	1033	51.48
Nut w/ oil bowl	1016	27.04	All parts other than body interchangeable			
Gland	1017	11.88				
S.S. rod 18" w/ 7/16" thd.	1019	30.00				
S.S. rod 18" w/ 5/8" thd.	2019	30.00				

S.L. Stuffing Boxes

Pipe Size	1-1/4"		1-1/2"		2"	
S.S. rod 18" w/7/16 thd.	10110	131.98	10210	138.54	10310	144.98
S.S. rod 18" w/ 5/8 thd.	20110	131.98	20210	138.54	20310	144.98

S.L. Repair Parts

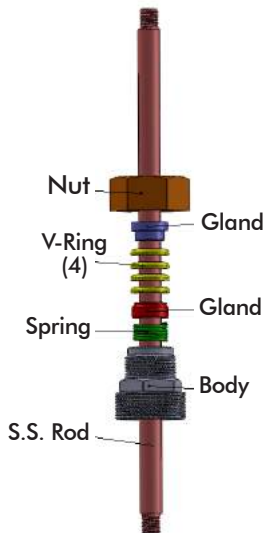
	1-1/4"		1-1/2"		2"	
Body	10112	40.44	10212	41.80	10312	44.82
Nut	10113	33.08	All parts other than body interchangeable			
Gland 1 set top & bottom	10114	16.16				
Spring	10115	5.24				
V-ring - requires 4	10116	2.08				

Modified IBT Stuffing Boxes

#4 IBT less bushing thread 1 1/4" pipe both ends - complete	1143	148.64
#4 IBT barrel only threaded 1 1/4" pipe both ends	1144	84.66

IBT Stuffing Boxes

P/N	Complete Units	List \$
1111	#1 IBT	116.90
1121	#2 IBT	138.16
1112	#3 IBT	147.16
1113	#4 IBT 2"	186.08
1114	#4 IBT 2 1/2"	201.76
1122	#5 IBT 2 1/2"	287.46
1123	#5 IBT 3"	351.52
1115	Barrel for #1	62.40
1125	Barrel for #2	66.16
1135	Barrel for #3	71.36
1145	Barrel for #4	86.96
1155	Barrel for #5	101.92
1126	2" Bushing for #2	41.60
1126	2" Bushing for #3	41.60
1146	2" Bushing for #4	41.60
1147	2 1/2" Bushing for #4	66.56
1157	2 1/2" Bushing for #5	66.56
1158	3" Bushing for #5	106.08
11111	Nut for #1	8.84
11211	Nut for #2	9.44
11311	Nut for #3	9.44
11411	Nut for #4	9.44
11511	Nut for #5	13.74
11112	Plunger ring for #1	7.56
11212	Plunger ring for #2	8.04
11312	Plunger ring for #3	8.04
11412	Plunger ring for #4	9.28
11512	Plunger ring for #5	12.90





MIDLAND WATER WELL CYLINDERS

Midland Heavy Service Boxes (extra heavy duty) are all brass with stainless steel rods and use square rope packing. Please see the Midland Catalog Online for specifications and ordering options at www.midland-midco.com and select 'Water Well Cylinders' and then the 'View Midland Catalog' on the left side of the page.

Midland Stuffing Boxes Continued

Heavy Service Packing Boxes

Pipe Size	2"		2-1/2"		3"	
S.S. rod 48" w/ 7/8" thread	1044	335.30	1054	368.36	1064	375.24
H.S. Repair Parts						
Body	1043	99.72	1053	123.92	1063	127.50
Nut	1046	71.14	1056	89.74	1056	89.74
Gland	1047	36.12	1057	36.66	1057	36.66
S.S. rod 48" w/7/8" thread	1049	116.82	Rods are universal for H.S.			

IBT Stuffing Boxes

P/N		List \$
11115	Couplings for #1	4.20
11215	Couplings for #2	4.70
11315	Couplings for #3	4.70
11415	Couplings for #4	4.70
11515	Couplings for #5	7.50
11110	Flat Spacers for #1	4.38
11210	Flat Spacers for #2	4.38
11310	Flat Spacers for #3	4.38
11410	Flat Spacers for #4	5.00
11510	Flat Spacers for #5	5.20
11114	S.S. Plunger rod #1	10.40
11214	S.S. Plunger rod #2	12.48
11314	S.S. Plunger rod #3	14.56
11414	S.S. Plunger rod #4	14.56
11514	S.S. Plunger rod #5	20.80
1119	#1 Plunger Complete	70.52
1129	#2 Plunger Complete	71.66
1139	#3 Plunger Complete	73.86
1149	#4 Plunger Complete	80.52
1159	#5 Plunger Complete	115.02





MIDLAND WATER WELL CYLINDERS

Midland Coupling Adaptors are made using 304 stainless steel and allows you to connect virtually all size components along the sucker rod quickly and easily. www.midland-midco.com

Stainless Steel Coupling Adaptors

Standard

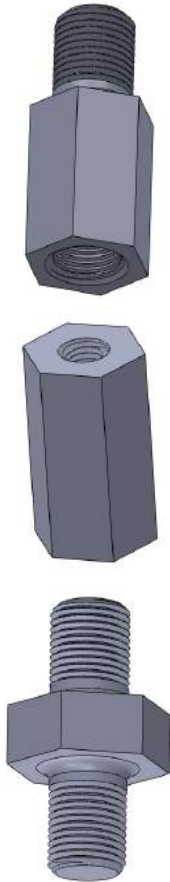
Diameter	Length	Description	Part #	List \$
5/8M	7/16F	5/8 NC M x 7/16 NC F	371308	18.94
5/8M	7/8M	5/8 NC M x 7/8 NC M	371314	18.94
7/8M	5/8F	7/8 NC M x 5/8 NC F	371325	18.94
5/8M NC	1/2F NPT	5/8 NC M x 1/2 NPT F	371332	18.94
7/8M NC	3/8F NPT	7/8 NC M x 3/8 NPT F	371330	18.94
7/8M NC	1/2F NPT	7/8 NC M x 1/2 NPT F	371327	18.94

Optional

Diameter	Length	Description	Part #	List \$
5/8M	5/8F	5/8 NC M x 5/8 NC F	371336	19.64
5/8M	5/8M	5/8 NC M x 5/8 NC M	371323	19.64
5/8F	5/8F	5/8 NC F x 5/8 NC F	371335	19.64
5/8M	3/4F	5/8 NC M x 3/4 NC F	371320	19.64
5/8M	7/8F	5/8 NC M x 7/8 NC F	371315	19.64
3/4M	5/8F	3/4 NC M x 5/8 NC F	371319	19.64
3/4F	5/8F	3/4 NC F x 5/8 NC F	371348	19.64
7/8M	7/16F	7/8 NC M x 7/16 NC F	371313	19.64
7/8F	5/8F	7/8 NC F x 5/8 NC F	371317	19.64
7/8M	7/8M	7/8 NC M x 7/8 NC M	371326	19.64
7/8M	7/8F	7/8 NC M x 7/8 NC F	371334	19.64
7/8F	7/8F	7/8 NC F x 7/8 NC F	371321	19.64
1M	5/8F	1 NC M x 5/8 NC F	371340	19.64
1M	7/8F	1 NC M x 7/8 NC F	371341	19.64
3/8F NC	1/2F NPT	3/8 NC F x 1/2 NPT F	371328	19.64
7/16M NC	1/2F NPT	7/16 NC M x 1/2 NPT F	371349	19.64
7/16F NC	1/2F NPT	7/16 NC F x 1/2 NPT F	371352	19.64
5/8M NC	3/8F NPT	5/8 NC M x 3/8 NPT F	371329	19.64
5/8F NC	3/8M NPT	5/8 NC F x 3/8 NPT M	371344	19.64
5/8M NC	1/2M NPT	5/8 NC M x 1/2 NPT M	371347	19.64
5/8F NC	1/2M NPT	5/8 NC F x 1/2 NPT M	371333	19.64
7/8F NC	3/8M NPT	7/8 NC F x 3/8 NPT M	371345	19.64
7/8F NC	1/2M NPT	7/8 NC F x 1/2 NPT M	371346	19.64
1M NC	1/2F NPT	1 NC M x 1/2 NPT F	371350	19.64

Optional

3/8F	3/8F	3/8 NC F x 3/8 NC F	371343	19.64
3/8F	7/16F	3/8 NC F x 7/16 NC F	371342	19.64
3/8M	5/8F	3/8 NC M x 5/8 NC F	371338	19.64
3/8F	7/8M	3/8 NC F x 7/8 NC M	371339	19.64
7/16F	3/8M	7/16 NC F x 3/8 NC M	371331	19.64
7/16F	7/16F	7/16 NC F x 7/16 NC F	371305	19.64
7/16F	1/2F	7/16 NC F x 1/2 NC F	371310	19.64
7/16M	1/2F	7/16 NC M x 1/2 NC F	371311	19.64
7/16F	5/8F	7/16 NC F x 5/8 NC F	371307	19.64
7/16M	5/8F	7/16 NC M x 5/8 NC F	371306	19.64
7/16M	7/8F	7/16 NC M x 7/8 NC F	371309	19.64
1/2M	7/16F	1/2 NC M x 7/16 NC F	371312	19.64
1/2F	7/8M	1/2 NC F x 7/8 NC M	371337	19.64
5/8M	3/8F	5/8 NC M x 3/8 NC F	371324	19.64
5/8M	1/2F	5/8 NC M x 1/2 NC F	371316	19.64
5/8F	1/2F	5/8 NC F x 1/2 NC F	371318	19.64



SEE ONLINE CATALOG FOR MORE DETAILS @ WWW.MIDLAND-MIDCO.COM

PRICES SUBJECT TO CHANGE WITHOUT NOTICE

1889 - 128 Years of Quality & Service - 2016

