



# MIDCO MUNICIPAL PRODUCTS

## PRICE BOOK March 2017



PVC PVC-O Joint Restraints



Companion Flanges



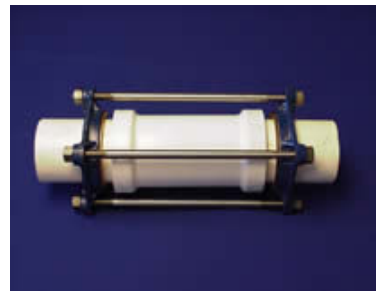
HDPE Joint Restraint Kits



Hinged Service Saddles



Water Meter Flange Kits



Coupling Restraints



Heavy Duty Meter Flanges



Ductile Iron Joint Restraints



Joint Restraint Pliers



Clean Out, Sewer & Water



Grooved Meter Flanges



MIDCO Accessories

## Midland Manufacturing Company

4800 Esco Drive, Fort Worth, Texas 76140

[www.midland-midco.com](http://www.midland-midco.com)

800-678-4848



# 2017 MIDCO Municipal Products

## Price Book, Discounts & Warranty

Please find enclosed our updated 2017 Price Book, discount program, and product warranty. In case you are not familiar with MIDCO, we produce the original (patented) joint restraint with an easy to install 360 degree bronze grip ring that has been successfully used for over 30 years in municipal and rural water systems. Our products have been tested on, recommended for, and successfully used on:

**PVC (IPS, C900).....Ductile Iron.....PVCO (IPS, C909).....HDPE (internal stiffener included)**

Our 1 ½" & 2" bronze water meter flanges are some of the best looking you will find anywhere and are priced to compete with all domestic and import flanges of the same specification. We also have complete water meter flange kits available.

### **DISCOUNT PROGRAM**

We are also pleased to expand our 'Discount Program'. Our standard discount on list prices is 50%. Orders that exceed \$10,000 list will receive a discount of 52.5% and orders that exceed \$20,000 list will receive a discount of 55%. ***AND, you can pick and choose the products you want; NO mandatory dust collectors required.*** Discounts apply to orders shipped to one location. These discounts are in addition to our *Free Shipping on orders over \$2,500*. Larger volume discounts will also be considered. Please inquire. All discounts subject to change without notice.

Shipping orders over \$2,500 to locations outside of the continental US is FREE to our designated port or border city; for example, Seattle for Alaska shipments, San Diego for Hawaii shipments, etc.

The current price book, product catalog, and submittals are also available @ [www.midland-midco.com](http://www.midland-midco.com) and hard back binder price books are available upon request.

***All Midland & MIDCO products and components are manufactured in the UNITED STATES OF AMERICA and are fully compliant with NSF 61 Annex G Standard 372 - Safe Drinking Water Act & Public Law 111-380, the "BUY AMERICAN" section 1605 of the ARRA of 2009, LEED 2009, FHWA Buy America, AIS, Conflict Minerals Requirements, and Recycled Materials Certifications.***

### **WARRANTY**

Goods manufactured by Midland Manufacturing Company which are found to be defective will be replaced at no charge upon written notice and receipt of defective parts. Since we have no control over the manner in which our equipment is installed and/or used, warranty obligations apply only when Midland products are used for the intended purpose in accordance with acceptable installation and operating practices. We are not responsible for labor or any other costs incurred in replacing or repairing damages, either direct or indirect, due to products of our manufacture. The amount of damage is limited to the price of defective goods only.



# MIDCO MUNICIPAL PRICE LIST

## FLANGES & KITS



### BRONZE WATER METER FLANGES

#### DOUBLE FLANGE KITS

	1 1/2" Regular	2" Regular	2" Slotted	1 1/2" Grooved	2" Grooved
<b>Gasket Type</b>	<b>\$92.96</b>	<b>\$95.42</b>	<b>\$95.42</b>	<b>\$92.96</b>	<b>\$95.42</b>
Drop In Neoprene	1915	1925	1935	1945	1955
Drop In Textured	1917	1927	1937	1947	1957
Full Face Neoprene	1916	1926	1936	1946	1956
Full Face Textured	1918	1928	1938	1948	1958

#### SINGLE FLANGE KITS

	1 1/2" Regular	2" Regular	2" Slotted	1 1/2" Grooved	2" Grooved
<b>Gasket Type</b>	<b>\$48.26</b>	<b>\$49.12</b>	<b>\$49.12</b>	<b>\$48.26</b>	<b>\$49.12</b>
Drop In Neoprene	19123	19223	19323	19423	19523
Drop In Textured	19125	19225	19325	19425	19525
Full Face Neoprene	19124	19224	19324	19424	19524
Full Face Textured	19126	19226	19326	19426	19526

#### HD SINGLE FLANGE KITS

	1 1/2"	2"
<b>Gasket Type</b>	<b>\$73.38</b>	<b>\$80.30</b>
Drop In Neoprene	29123	29223
Drop In Textured	29125	29225
Full Face Neoprene	29124	29224
Full Face Textured	29126	29226

#### HD DOUBLE FLANGE KITS

	1 1/2"	2"
<b>Gasket Type</b>	<b>\$143.12</b>	<b>\$156.98</b>
Drop In Neoprene	2915	2925
Drop In Textured	2917	2927
Full Face Neoprene	2916	2926
Full Face Textured	2918	2928

#### INDIVIDUAL FLANGES

STANDARD			HEAVY DUTY		
1 1/2" Regular	1911	<b>\$42.86</b>	2911	<b>\$67.52</b>	
2" Regular	1921	<b>\$44.72</b>	2921	<b>\$74.44</b>	
2" Slotted	1931	<b>\$44.72</b>	X	X	X
1 1/2" Grooved	1941	<b>\$42.86</b>	X	X	X
2" Grooved	1951	<b>\$44.72</b>	X	X	X

**FREIGHT PREPAID ON \$2,500.00 NET ORDERS**

PRICES SUBJECT TO CHANGE WITHOUT NOTICE

**Midland Manufacturing Company**  
**4800 Esco Drive, Fort Worth, Texas 76140**



# MIDCO MUNICIPAL PRICE LIST

## FLANGES



### BRONZE WATER METER FLANGE ACCESSORIES

#### GASKETS

Gasket Type	1 1/2"	2"
<b>Neoprene</b>	<b>\$1.56</b>	<b>\$1.72</b>
Drop In Neoprene	1975	1977
Full Face Neoprene	1976	1978
<b>Red Rubber Textured</b>	<b>\$3.02</b>	<b>\$3.18</b>
Drop In Textured	1995	1997
Full Face Textured	1996	1998

#### HARDWARE (zinc plated bolts)

Size	Item#	
5/8" x 2 1/2" Bolt w/nut	1974	<b>\$2.32</b>
3/4" x 2 1/2" Bolt w/nut	1973	<b>\$4.22</b>

#### BRASS METER BOX KEYS

1414	<b>\$9.50</b>
------	---------------

### MISCELLANEOUS FLANGES & MARKERS

#### COMPANION FLANGES



Individual Flanges			Flange Kits		
14120	3"	<b>\$183.24</b>	14220	3"	<b>\$377.32</b>
14122	4"	<b>\$294.28</b>	14222	4"	<b>\$609.52</b>
14123	6"	<b>\$386.62</b>	14223	6"	<b>\$797.82</b>
14124	8"	<b>\$485.82</b>	14224	8"	<b>\$1,002.30</b>

#### FLOOR FLANGES

Brass Floor Flange 16 oz	1511	4"	<b>\$19.82</b>
Brass Repair Flange 20 oz	1512	4"	<b>\$25.80</b>
Brass Closet Offset 44 oz	1514	4"	<b>\$29.52</b>

#### MARKERS

Bronze <b>Clean Out</b> Markers	1415	NA	<b>\$1.12</b>
Bronze <b>Water</b> Markers	1417	NA	<b>\$10.30</b>
Bronze <b>Sewer</b> Markers	1418	NA	<b>\$10.30</b>



**FREIGHT PREPAID ON \$2,500.00 NET ORDERS**  
 PRICES SUBJECT TO CHANGE WITHOUT NOTICE

**Midland Manufacturing Company**  
 4800 Esco Drive, Fort Worth, Texas 76140



# MIDCO MUNICIPAL PRICE LIST

## JOINT RESTRAINTS



### SERIES 3000 (STYLE 30)

#### PVC (IPS, C900), PVCO (IPS, C909)

##### RG UNITS

IPS			C900		
3011	2"	\$43.56			
3012	3"	\$47.26			
3013	4"	\$47.98	3023	4"	\$44.64
3014	6"	\$70.20	3024	6"	\$52.44
3015	8"	\$99.86	3025	8"	\$83.26
3016	10"	\$141.48	3026	10"	\$134.82
3017	12"	\$172.40	3027	12"	\$152.18

##### COMPLETE KITS

IPS			C900		
3018	2"	\$52.44			
3019	3"	\$61.68			
30110	4"	\$63.26	30210	4"	\$57.26
30111	6"	\$81.56	30211	6"	\$71.22
30112	8"	\$126.18	30212	8"	\$104.64
30113	10"	\$185.08	30213	10"	\$154.32
30114	12"	\$203.96	30214	12"	\$182.94

### HDPE KITS with STIFFENERS (304 stainless steel)

(Specify SDR 11, 13.5, 17)



IPS			C900		
30115	2"	\$97.48			
30116	3"	\$148.50			
30117	4"	\$162.54	30217	4"	\$156.64
30118	6"	\$197.38	30218	6"	\$187.26
30119	8"	\$265.68	30219	8"	\$244.56
30120	10"	\$349.36	30220	10"	\$319.22
30121	12"	\$395.18	30221	12"	\$374.58



### SERIES 4000 (STYLE 40)

#### Ductile Iron Pipe



RG UNITS			COMPLETE KITS		
4013	4"	\$42.70	40110	4"	\$59.36
4014	6"	\$58.54	40111	6"	\$76.34
4015	8"	\$95.68	40112	8"	\$114.80
4016	10"	\$139.42	40113	10"	\$157.48
4017	12"	\$154.82	40114	12"	\$187.14



**FREIGHT PREPAID ON \$2,500.00 NET ORDERS**

PRICES SUBJECT TO CHANGE WITHOUT NOTICE

**Midland Manufacturing Company**  
4800 Esco Drive, Fort Worth, Texas 76140



# MIDCO MUNICIPAL PRICE LIST

See Online Catalog for more items

## Accessories & Coupling Restraints



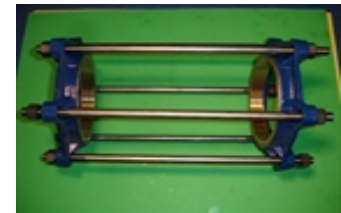
### JOINT RESTRAINT - REPAIR PARTS & ACCESSORIES

BRASS GRIP RINGS			DIPS GRIP RINGS			IRON GLANDS					
IPS			C900			Heat Treat Bronze Rings					
3031	2"	\$25.74						3051	2"	\$23.60	
3032	3"	\$34.52						3052	3"	\$31.16	
3033	4"	\$41.12	3043	4"	\$40.50	4043	4"	\$41.50	3053	4"	\$38.02
3034	6"	\$50.74	3044	6"	\$50.18	4044	6"	\$51.30	3054	6"	\$47.76
3035	8"	\$84.44	3045	8"	\$76.58	4045	8"	\$77.68	3055	8"	\$70.08
3036	10"	\$100.48	3046	10"	\$99.08	4046	10"	\$100.34	3056	10"	\$90.54
3037	12"	\$118.92	3047	12"	\$117.36	4047	12"	\$135.22	3057	12"	\$105.62



#### T-Bolts w/ Nuts

5/8" x 3 1/2"	3068	\$3.24
3/4" x 4"	3069	\$3.50



### COUPLING RESTRAINT KITS

#### PVC (IPS, C900), PVCO (IPS, C900, C909)

#### 18" cold-rolled plated connecting rods, nuts

IPS			C900		
4711	2"	\$74.58			
4712	3"	\$113.06			
4713	4"	\$131.88	4723	4"	\$120.92
4714	6"	\$187.02	4724	6"	\$157.08
4715	8"	\$268.96	4725	8"	\$213.80
4716	10"	\$353.60	4726	10"	\$332.60
4717	12"	\$430.18	4727	12"	\$356.24

#### 24" cold-rolled plated connecting rods, nuts

IPS			C900		
4731	2"	\$80.76			
4732	3"	\$119.24			
4733	4"	\$138.06	4743	4"	\$131.96
4734	6"	\$197.32	4744	6"	\$170.98
4735	8"	\$281.32	4745	8"	\$237.56
4736	10"	\$370.30	4746	10"	\$356.36
4737	12"	\$445.48	4747	12"	\$384.82

#### STA-PUT FLANGE ADAPTORS

4514	6"Style 30 IPS	\$130.76
4524	6"Style 30 C900	\$126.28
4534	6"Style 40 DIPS	\$130.18

#### PLIERS

5051	\$23.12
------	---------

#### SPLIT RING ANCHOR KITS

4613	4"	\$142.30
4614	6"	\$191.08
4615	8"	\$232.70

**FREIGHT PREPAID ON \$2,500.00 NET ORDERS**

PRICES SUBJECT TO CHANGE WITHOUT NOTICE

**Midland Manufacturing Company**  
4800 Esco Drive, Fort Worth, Texas 76140



## MIDCO MUNICIPAL PRICE LIST

### SERIES 550 HINGED BRONZE SERVICE SADDLES

IPS						C900				
Nom. Size Inches	O.D. Inches	Tap Size & Type Inches	Part Number	List Price		Nom. Size Inches	O.D. Inches	Tap Size & Type Inches	Part Number	List Price
<b>2"</b>	<b>2.38</b>	1/2" IP	5511	<b>\$35.12</b>				<b>N/A</b>		
		1/2" CC	55150							
		3/4" IP	5512							
		3/4" CC	55151							
		1" IP	5513							
		1" CC	55152							
<b>2-1/2"</b>	<b>2.88</b>	1/2" IP	5514	<b>\$39.20</b>				<b>N/A</b>		
		1/2" CC	55153							
		3/4" IP	5515							
		3/4" CC	55154							
		1" IP	5516							
		1" CC	55155							
<b>3"</b>	<b>3.5</b>	1/2" IP	5517	<b>\$41.26</b>				<b>N/A</b>		
		1/2" CC	55156							
		3/4" IP	5518							
		3/4" CC	55157							
		1" IP	5519							
		1" CC	55158							
<b>4"</b>	<b>4.5</b>	1/2" IP	55110	<b>\$46.22</b>		<b>4"</b>	<b>4.8</b>	1/2" IP	55210	<b>\$47.54</b>
		1/2" CC	55159					1/2" CC	55259	
		3/4" IP	55111					3/4" IP	55211	
		3/4" CC	55160					3/4" CC	55260	
		1" IP	55112					1" IP	55212	
		1" CC	55161					1" CC	55261	

**FREIGHT PREPAID ON \$2,500.00 NET ORDERS**

PRICES SUBJECT TO CHANGE WITHOUT NOTICE

**Midland Manufacturing Company**  
 4800 Esco Drive, Fort Worth, Texas 76140



## MIDCO MUNICIPAL PRICE LIST

### SERIES 550 HINGED BRONZE SERVICE SADDLES

IPS						C900				
Nom. Size Inches	O.D. Inches	Tap Size & Type Inches	Part Number	List Price		Nom. Size Inches	O.D. Inches	Tap Size & Type Inches	Part Number	List Price
<b>6"</b>	<b>6.63</b>	1/2" IP	55113	<b>\$68.02</b>		<b>6"</b>	<b>6.9</b>	1/2" IP	55213	<b>\$64.12</b>
		1/2" CC	55162					1/2" CC	55262	
		3/4" IP	55114					3/4" IP	55214	
		3/4" CC	55163					3/4" CC	55263	
		1" IP	55115					1" IP	55215	
		1" CC	55164					1" CC	55264	
<b>8"</b>	<b>8.63</b>	1/2" IP	55116	<b>\$94.00</b>		<b>8"</b>	<b>9.05</b>	1/2" IP	55216	<b>\$92.34</b>
		1/2" CC	55165					1/2" CC	55265	
		3/4" IP	55117					3/4" IP	55217	
		3/4" CC	55166					3/4" CC	55266	
		1" IP	55118					1" IP	55218	
		1" CC	55167					1" CC	55267	
<b>10"</b>	<b>10.75</b>	1/2" IP	55119	<b>\$181.50</b>		<b>10"</b>	<b>11.1</b>	1/2" IP	55219	<b>\$164.68</b>
		1/2" CC	55168					1/2" CC	55268	
		3/4" IP	55120					3/4" IP	55220	
		3/4" CC	55169					3/4" CC	55269	
		1" IP	55121					1" IP	55221	
		1" CC	55170					1" CC	55270	
<b>12"</b>	<b>12.75</b>	1/2" IP	55122	<b>\$243.10</b>		<b>12"</b>	<b>13.2</b>	1/2" IP	55222	<b>\$205.72</b>
		1/2" CC	55171					1/2" CC	55271	
		3/4" IP	55123					3/4" IP	55223	
		3/4" CC	55172					3/4" CC	55272	
		1" IP	55124					1" IP	55224	
		1" CC	55173					1" CC	55273	

**FREIGHT PREPAID ON \$2,500.00 NET ORDERS**  
 PRICES SUBJECT TO CHANGE WITHOUT NOTICE

**Midland Manufacturing Company**  
 4800 Esco Drive, Fort Worth, Texas 76140