



MIDLAND MFG CO.
ESTABLISHED 1889 - FORT WORTH



MIDLAND WELL CYLINDERS

DEEP WELL, SHALLOW WELL & HEAVY WALL CYLINDERS
FLOAT VALVES, TANK FLANGES, STUFFING BOXES

PRICE BOOK
December 1, 2022

MIDLAND MANUFACTURING COMPANY

4800 Esco Drive
Fort Worth, Texas 76140
817-478-4848 | 800-678-4848
www.midland-midco.com | custserv@midland-midco.com

MANUFACTURING
WATER WELL CYLINDERS
FOR OVER 130 YEARS

LEADING THE INDUSTRY WITH OUR QUALITY & SERVICE

Cast Bronze Products

MARCOZA Architectural/Memorial Products

MIDCO Municipal Products



2022 MIDLAND WATER WELL CYLINDERS PRICE BOOK

Shipping Discounts & Warranty

SHIPPING PROGRAM

Prepaid freight is available on \$3,200 net orders or larger and is FOB our dock in Fort Worth to destination or port of departure for locations outside the continental 48 states. Midland Manufacturing Company is not responsible for additional freight delivery charges such as residential deliveries, inside deliveries, deliveries by appointment, deliveries without a dock, deliveries on military bases, or excessive unloading time. Additional delivery fees may also apply as this is not a complete list of delivery exceptions.

Shipping net orders over \$3,200 to locations outside of the continental US is FREE to our designated port or border city; Seattle for Alaska shipments, San Diego for Hawaii shipments, etc. All discounts subject to change without notice.

The current price book, product catalog, and product details are also available at www.midland-midco.com and hard back binder price books are available upon request at no charge.

ORDERING: *Please send all orders by email to custserv@midland-midco.com for faster processing.*

All Midland & MIDCO products and components are fully compliant with NSF 61 Annex G Standard 372 - Safe Drinking Water Act & Public Law 111-380, the "BUY AMERICAN" section 1605 of the ARRA, Conflict Minerals Requirements, and Recycled Materials Certifications.

WARRANTY

Goods manufactured by Midland Manufacturing Company which are found to be defective will be replaced at no charge upon written notice and receipt of defective parts, normal wear excluded. Since we have no control over the manner in which our equipment is installed and/or used, warranty obligations apply only when Midland products are used for the intended purpose in accordance with acceptable installation and operating practices. We are not responsible for labor or any other costs incurred in replacing or repairing damages, either direct or indirect, due to products of our manufacture. The amount of damage is limited to the price of defective goods only.

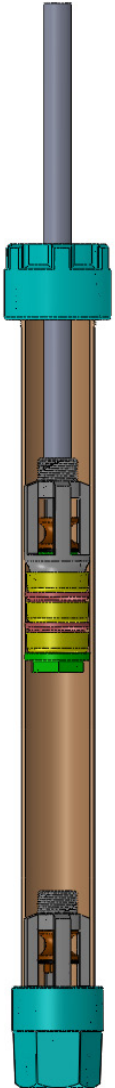


MIDLAND WATER WELL CYLINDERS

All brass Deep Well #449 open top cylinders are made with 11 Gauge (.125 wall) seamless brass tubing; available with solid bronze BALL valves or SPOOL valves. Select 3 leathers or 4 leathers on your plunger valve. Plungers are tapped in bottom so they can screw onto the check valve for easy removal. The #449 caps are not interchangeable with #852 barrels. Longer strokes are available upon request. Please see our online catalog for product specifications and details at: www.midland-midco.com

#449 11 Gauge Prices

			#449				#449B				Repair Barrels			
Inside Diameter	Barrel Length	Stroke	P/N	3 Leather Spool Plunger	P/N	4 Leather Spool Plunger	P/N	3 Leather Ball Plunger	P/N	4 Leather Ball Plunger	P/N	BLC Barrels less Caps	P/N	BWC Barrels With Caps
			1-3/8"	18	10	211	414.48	221	N/A	231	403.66	241	N/A	251
	24	17	212	446.94	222	N/A	232	436.16	242	N/A	252	159.30	262	243.60
	30	23	213	479.44	223	N/A	233	468.60	243	N/A	253	192.10	263	276.12
1-7/8"	18	8	214	454.70	224	504.18	234	459.34	244	510.38	254	156.16	264	268.62
	24	14	215	490.26	225	539.74	235	494.90	245	545.94	255	192.10	265	304.50
	30	20	216	524.82	226	575.32	236	530.46	246	581.52	256	227.98	266	340.44
	36	26	217	559.40	227	610.90	237	566.04	247	617.10	257	263.90	267	376.14
	42	32	218	593.96	228	646.46	238	601.62	248	652.66	258	299.52	268	411.82
2-1/4"	24	13	219	607.82	229	703.68	239	643.38	249	705.24	259	217.06	269	384.12
	30	19	2110	658.84	2210	754.72	2310	694.40	2410	756.26	2510	268.60	2610	435.68
	36	26	2111	709.88	2211	805.76	2311	745.46	2411	807.30	2511	320.12	2611	487.32
	42	31	2112	760.92	2212	856.78	2312	796.48	2412	858.34	2512	371.66	2612	539.34
2-3/4"	24	12	2113	904.74	2213	980.52	2313	940.30	2413	1,035.66	2513	291.46	2613	527.82
	30	18	2114	961.96	2214	1,037.74	2314	997.54	2414	1,091.86	2514	348.24	2614	585.60
	36	24	2115	1,019.20	2215	1,094.66	2315	1,054.78	2415	1,149.08	2515	405.68	2615	643.38
	42	30	2116	1,076.42	2216	1,151.88	2316	1,111.98	2416	1,206.32	2516	462.80	2616	701.46
	48	36	2117	1,132.64	2217	1,209.00	2317	1,169.20	2417	1,263.54	2517	519.56	2617	759.52
3-3/4"	36	20	2118	1,616.16	2218	1,724.40	2318	1,871.34	2418	1,973.42	2518	435.68	2618	718.42
	42	26	2119	1,705.84	2219	1,814.12	2319	1,961.02	2419	2,063.08	2519	525.96	2619	808.02
	48	32	2120	1,795.54	2220	1,903.80	2320	2,050.70	2420	2,152.80	2520	614.82	2620	897.44
	54	38	2121	1,885.26	2221	1,993.50	2321	2,140.44	2421	2,242.50	2521	705.40	2621	987.02
	60	44	2122	1,974.92	2222	2,087.52	2322	2,230.14	2422	2,332.18	2522	794.96	2622	1,076.58



SEE ONLINE CATALOG FOR MORE DETAILS @ WWW.MIDLAND-MIDCO.COM

PRICES SUBJECT TO CHANGE WITHOUT NOTICE

1889 - 133 Years of Quality & Service - 2022





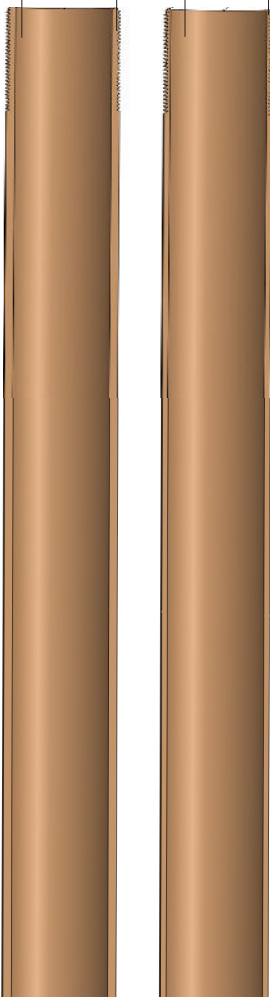
MIDLAND WATER WELL CYLINDERS

All brass Heavy Barrel #852 (Deep Well) open top cylinders are made with 10 Gauge (.187 wall) seamless brass tubing; available with solid bronze BALL valves or SPOOL valves. Select 3 leathers or 4 leathers on your plunger valve. Plungers are tapped in bottom so they can screw onto the check valve for easy removal. The #852 caps are not interchangeable with #449 barrels. Longer strokes are available upon request. Please see our online catalog for product specifications and details at: www.midland-midco.com

Heavy Barrel #852 Prices

852 Cylinder
.187" Thickness

449 Cylinder
.125" Thickness



Inside Diameter	Barrel Length	Stroke	#852				#852B				Repair Barrels			
			P/N	3 Leather Spool Plunger	P/N	4 Leather Spool Plunger	P/N	3 Leather Ball Plunger	P/N	4 Leather Ball Plunger	P/N	BLC Barrels less Caps	P/N	BWC Barrels With Caps
1 7/8"	24	14	8012	553.00	8022	605.08	8032	546.86	8042	579.04	8052	229.48	8062	346.50
	30	20	8013	603.54	8023	655.62	8033	597.42	8043	629.58	8053	280.96	8063	398.02
	36	26	8014	654.10	8024	706.18	8034	647.96	8044	680.14	8054	332.48	8064	449.52
	42	32	8015	704.64	8025	756.72	8035	698.52	8045	730.68	8055	383.94	8065	501.04
	48	38	8016	755.22	8026	807.30	8036	749.06	8046	781.24	8056	435.48	8066	552.52
2 1/4"	24	13	8018	727.60	8028	758.24	8038	718.42	8048	767.46	8058	260.68	8068	443.28
	30	19	8019	784.30	8029	814.94	8039	775.10	8049	824.14	8059	318.40	8069	501.04
	36	26	80110	840.98	80210	872.40	80310	831.78	80410	880.80	80510	376.16	80610	558.76
	42	31	80111	896.64	80211	930.08	80311	888.46	80411	937.50	80511	433.90	80611	616.52
	48	37	80112	953.32	80212	987.46	80312	944.72	80412	994.14	80512	491.68	80612	674.26
2 3/4"	24	12	80113	972.70	80213	1,043.18	80313	1,009.50	80413	1,069.22	80513	323.10	80613	614.96
	30	18	80114	1,037.06	80214	1,104.70	80314	1,073.82	80414	1,133.54	80514	388.64	80614	680.50
	36	24	80115	1,101.88	80215	1,166.34	80315	1,138.14	80415	1,197.90	80515	453.28	80615	745.04
	42	30	80116	1,166.22	80216	1,228.18	80316	1,202.60	80416	1,262.24	80516	517.74	80616	809.60
	48	36	80117	1,230.86	80217	1,290.50	80317	1,267.24	80417	1,326.86	80517	582.30	80617	874.14
3 3/4"	30	18	80118	1,724.82	80218	1,812.16	80318	1,946.96	80418	2,025.08	80518	491.86	80618	800.66
	36	20	80119	1,813.68	80219	1,901.00	80319	2,035.80	80419	2,113.92	80519	581.56	80619	889.38
	42	26	80120	1,902.56	80220	1,989.86	80320	2,124.64	80420	2,202.74	80520	670.26	80620	978.08
	48	32	80121	1,993.50	80221	2,078.68	80321	2,213.50	80421	2,291.62	80521	758.98	80621	1,066.78

SEE ONLINE CATALOG FOR MORE DETAILS @ WWW.MIDLAND-MIDCO.COM

PRICES SUBJECT TO CHANGE WITHOUT NOTICE

1889 - 133 Years of Quality & Service - 2022





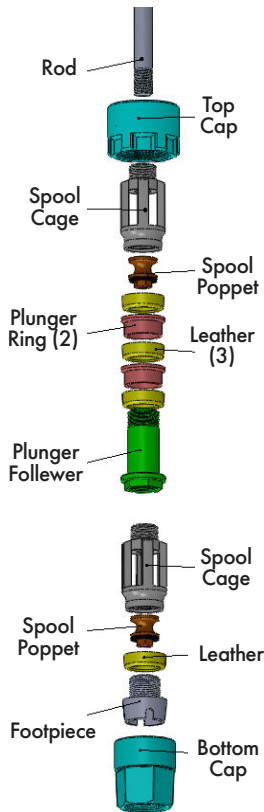
MIDLAND WATER WELL CYLINDERS

All Deep Well Repair Parts can be used for both #449 and #852 cylinders, except for the top caps and bottom caps which are not interchangeable. Please see our online catalog for product specifications and details at: www.midland-midco.com



Deep Well Repair Parts

For #449 & #852 Cylinders



Part Description	1-3/8"	List \$	1-7/8"	List \$	2-1/4"	List \$	2-3/4"	List \$	3-3/4"	List \$
11 Gauge Top Cap for #449	3122	45.00	3222	62.18	3322	96.52	3422	131.24	3522	219.64
11 Gauge Bottom Cap for #449	3123	50.54	3223	70.94	3323	107.84	3423	136.42	3523	237.14
Top Cap for #852	*	*	80724	62.18	80726	96.52	80728	131.24	80730	219.64
Bottom Cap for #852	*	*	80725	70.94	80727	107.84	80729	136.42	80731	248.84
Spool Plunger Valve complete										
3 Leather	3126	145.68	3226	182.24	3326	217.78	3426	311.38	3526	627.66
4 Leather	*	*	3227	229.06	3327	268.42	3427	375.12	3527	749.14
Ball Plunger Valve complete										
3 Leather	3128	142.54	3228	184.06	3328	233.70	3428	363.28	3528	814.02
4 Leather	*	*	3229	230.90	3329	285.06	3429	426.54	3529	932.98
Spool Check Valve complete	3130	111.14	3230	129.08	3330	168.66	3430	227.92	3530	466.76
Ball Check Valve complete	3131	104.12	3231	136.70	3331	182.52	3431	295.20	3531	668.00
Spool Plunger/Check Cage	3132	54.88	3232	60.20	3332	79.44	3432	111.32	3532	205.20
Ball Plunger/Check Cage	3133	49.90	3233	60.20	3333	79.50	3433	111.32	3533	205.20
Plunger Follower 3 leather	3134	39.70	3234	45.98	3334	54.52	3434	77.74	3534	180.46
Plunger Follower 4 leather	*	*	3235	73.36	3335	83.04	3435	108.66	3535	245.58
Plunger Ring	3136	12.14	3236	13.88	3336	16.96	3436	26.16	3536	43.98
Footpiece (check bottom)	3139	36.60	3239	39.70	3339	51.90	3439	65.90	3539	136.34
Spool Poppet Complete	3140	25.32	3240	30.44	3340	35.02	3440	46.82	3540	107.84
Spool Poppet Nut	3141	1.20	3241	1.46	3341	1.84	3441	2.22	3541	3.98
Spool Poppet Washer	3142	3.34	3242	4.16	3342	4.50	3442	4.98	3542	6.24
Bronze Balls	3143	12.58	3243	28.94	3343	45.00	3443	115.70	3543	318.82
Size Ball Inches	3/4"		1-1/16"		1-5/16"		1-3/4"		2-1/2"	

SEE ONLINE CATALOG FOR MORE DETAILS @ WWW.MIDLAND-MIDCO.COM

PRICES SUBJECT TO CHANGE WITHOUT NOTICE

1889 - 133 Years of Quality & Service - 2022



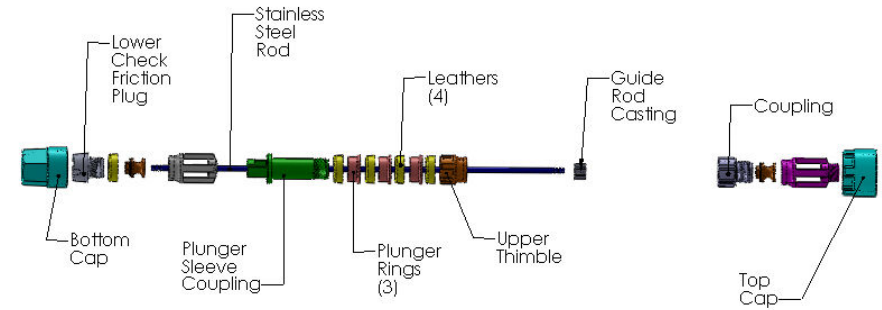


MIDLAND WATER WELL CYLINDERS

E-Z Pull Cylinders are designed to make the pulling of the lower check valve easy by attaching the lower spool with a stainless steel rod which is also attached to the plunger valve. When the plunger valve is withdrawn, it opens the lower check valve releasing the water which is then withdrawn with the plunger valve. The up and down movement or jarring motion of the rods (not a steady pull) enable the removal of the lower valve. The lower check valve can be cleaned by raising the spool off the seat slightly and letting the water inside the pipe flush back thru the lower valve. E-Z Pull Cylinders are available in 11 Gauge #449 and 10 Gauge #852. The plunger pipe is 6" shorter than the cylinder; the guide rod is the same length as the cylinder barrel. Please see our online catalog for product specifications and details at: www.midland-midco.com

E-Z Pull Cylinders

Inside Diameter	Barrel Length	Stroke	P/N	#449 11 Gauge Barrel		#852 10 Gauge Heavy Barrel		Complete #19 Plunger Assembly
				P/N	P/N	P/N	P/N	
1-7/8"	24	12	411	626.58	8072	713.04	421	399.58
	30	18	412	661.46	8073	763.10	422	421.02
	36	24	413	696.36	8074	813.16	423	443.96
	42	30	414	731.26	8075	863.22	424	465.38
2-1/4"	24	10	416	775.24	8077	895.10	426	517.44
	30	16	417	825.30	8078	951.24	427	552.66
	36	22	418	875.36	8079	1007.36	428	587.86
	42	28	419	925.44	80710	1063.50	429	622.88
2-3/4"	24	6	4111	1039.22	80712	1159.06	4211	592.48
	30	12	4112	1095.34	80713	1247.06	4212	633.80
	36	18	4113	1151.48	80714	1335.00	4213	674.98
	42	24	4114	1207.62	80715	1423.04	4214	715.98
48	30	4115	1263.76	80716	1511.04	4215	756.80	



Length of Cylinder	24"	30"	36"	42"	48"					
* #4 Plunger pipe - 1 7/8"	4131	47.78	4132	63.68	4133	79.62	4134	95.54	4135	111.46
* #4 Plunger pipe - 2 1/4"	4231	57.34	4232	76.44	4233	95.54	4234	114.64	4235	133.76
* #4 Plunger pipe - 2 3/4"	4331	66.88	4332	89.10	4333	111.46	4334	133.76	4335	156.04
** #10 SS Guide Rod - all sizes same	4136	51.58	4137	64.52	4138	77.40	4139	90.32	4140	103.22

E-Z Pull Repair Parts

Description	P/N	1-7/8"	P/N	2-1/4"	P/N	2-3/4"
#1 Upper check cage	4116	55.36	4216	79.00	4316	107.00
#2 Upper check spool complete	4117	29.84	4217	32.78	4317	46.50
#3 Upper thimble	4118	37.18	4218	48.82	4318	64.36
#3A Upper check assembly	4119	111.72	4219	147.18	4319	198.98
#4 Plunger pipe - per foot						*
#5 Plunger sleeve coupling	4121	25.36	4221	38.32	4321	45.30
#6 Plunger sleeve	4122	49.38	4222	82.62	4322	162.36
#7 Plunger rings	4123	11.68	4223	13.40	4323	16.34
#9 Plunger complete assembly	4124	130.74	4224	187.68	4324	232.36
#10 SS Guide rod - per foot						**
#11 Guide rod casting	4126	10.86	4226	11.70	4326	12.68
#12 Lower check cage	4127	59.18	4227	60.66	4327	77.34
#13 Lower check friction plug	4128	36.20	4228	48.82	4328	64.88
#14 Lower check spool complete	4129	33.92	4229	39.02	4329	54.22
#15A Lower check assembly-L/Rod	4130	125.48	4230	146.94	4330	188.06

* See table above for details.

** See table above for details.

SEE ONLINE CATALOG FOR MORE DETAILS @ WWW.MIDLAND-MIDCO.COM

PRICES SUBJECT TO CHANGE WITHOUT NOTICE

1889 - 133 Years of Quality & Service - 2022

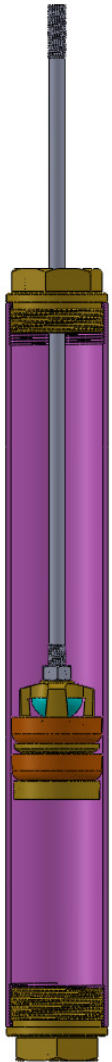




MIDLAND WATER WELL CYLINDERS

The **Shallow Well #442 and #444** are closed top cylinders designed for smaller diameter shallow depth wells made with 11 Gauge seamless brass tubing. The #442 plunger is all brass with a hemispherical poppet; the check poppet is fitted with a special facing for a secure seal. The #444 has a special facing on both the check and plunger poppet. A 2" clearance is provided for operation at each stroke specified. There are 6" I.D. cylinders available, upon request. Call for quote. Please see our online catalog for more product specifications and details at: www.midland-midco.com

Shallow Well #442 and #444



Cylinder I.D.	Length & Std Pipe Connections	Stroke	#442		#444														
			P/N	List \$	P/N	List \$	Pipe Cap Size Option	Stroke	P/N	#442	P/N	#444	Pipe Cap Size Option	Stroke	P/N	#442	P/N	#444	
2"	x 14" x 1-1/4"	6	612	323.04	622	344.88													
	x 16" x 1-1/4"	8	613	335.34	623	354.14													
	x 18" x 1-1/4"	10	614	347.42	624	363.46													
	x 20" x 1-1/4"	12	615	359.52	625	372.74													
2-1/4"	x 14" x 1-1/4"	6	617	361.14	627	386.66													
	x 16" x 1-1/4"	8	618	371.18	628	396.72													
	x 18" x 1-1/4"	10	619	381.26	629	406.76													
	x 20" x 1-1/4"	12	6110	391.30	6210	417.00													
2-1/2"	x 14" x 1-1/4"	6	6112	395.36	6212	426.10	x 14" x 1-1/2"	6	16112	395.36	16212	426.10							
	x 16" x 1-1/4"	8	6113	409.00	6213	436.42	x 16" x 1-1/2"	8	16113	409.00	16213	436.42							
	x 18" x 1-1/4"	10	6114	422.64	6214	447.44	x 18" x 1-1/2"	10	16114	422.64	16214	447.44							
	x 20" x 1-1/4"	12	6115	436.28	6215	457.72	x 20" x 1-1/2"	12	16115	436.28	16215	457.72							
3"	x 14" x 1-1/2"	6	6122	515.80	6222	551.36	x 14" x 1-1/4"	6	16122	515.80	16222	551.36	x 14" x 2"	6	26122	515.80	26222	551.36	
	x 16" x 1-1/2"	8	6123	528.94	6223	564.50	x 16" x 1-1/4"	8	16123	528.94	16223	564.50	x 16" x 2"	8	26123	528.94	26223	564.50	
	x 18" x 1-1/2"	10	6124	542.10	6224	577.68	x 18" x 1-1/4"	10	16124	542.10	16224	577.68	x 18" x 2"	10	26124	542.10	26224	577.68	
	x 20" x 1-1/2"	12	6125	563.66	6225	590.80	x 20" x 1-1/4"	12	16125	563.66	16225	590.80	x 20" x 2"	12	26125	563.66	26225	590.80	
3-1/2"	x 14" x 2"	7	6127	682.04	6227	735.10													
	x 16" x 2"	9	6128	695.96	6228	748.54													
	x 18" x 2"	11	6129	710.72	6229	762.48													
	x 20" x 2"	13	6130	723.78	6230	775.76													
4"	x 14" x 2"	7	6132	850.62	6232	907.84													
	x 16" x 2"	9	6133	866.08	6233	923.30													
	x 18" x 2"	11	6134	881.54	6234	938.78													
	x 20" x 2"	13	6135	897.00	6235	954.12													

SEE ONLINE CATALOG FOR MORE DETAILS @ WWW.MIDLAND-MIDCO.COM

PRICES SUBJECT TO CHANGE WITHOUT NOTICE

1889 - 133 Years of Quality & Service - 2022

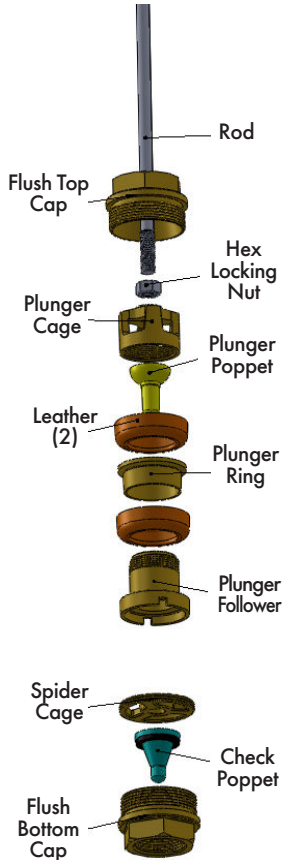




MIDLAND WATER WELL CYLINDERS

All Shallow Well Repair Parts can be used for both #442 and #444 cylinders. Select your choice of hemispherical (#442) or faced poppet (#444) for the plunger, which are interchangeable. Please see our online catalog for product specifications and details at: www.midland-midco.com

Shallow Well Repair Parts



Description	2"	List \$	2 1/4"	List \$	2 1/2"	List \$	3"	List \$	3 1/2"	List \$	4"	List \$
Flush barrel less caps 14"	819	107.82	829	113.68	839	128.80	859	148.66	869	182.38	879	217.84
16"	8110	117.36	8210	124.80	8310	140.72	8510	162.18	8610	196.70	8710	233.74
18"	8111	126.88	8211	135.96	8311	152.64	8511	175.70	8611	211.02	8711	249.64
20"	8112	136.42	8212	147.06	8312	164.56	8512	189.22	8612	225.32	8712	265.52
22"	8113	145.98	8213	158.20	8313	176.52	8513	202.74	8613	239.62	8713	281.44
24"	8114	155.52	8214	169.34	8314	188.44	8514	216.24	8614	253.92	8714	297.32
Flush Top Cap 1 1/4"	8115	44.68	8215	50.94	8315	61.54	8515	76.82	N/A	N/A	N/A	N/A
Flush Top Cap 1 1/2"	N/A	N/A	N/A	N/A	8316	61.54	8516	76.82	N/A	N/A	N/A	N/A
Flush Top Cap 2"	N/A	N/A	N/A	N/A	N/A	N/A	8540	76.82	8640	120.42	8740	125.24
Flush Bottom Cap 1 1/4"	8117	44.68	8217	50.94	8317	61.54	8517	76.82	N/A	N/A	N/A	N/A
Flush Bottom Cap 1 1/2"	N/A	N/A	N/A	N/A	8318	61.54	8518	76.82	N/A	N/A	N/A	N/A
Flush Bottom Cap 2"	N/A	N/A	N/A	N/A	N/A	N/A	8541	76.82	8641	120.42	8741	125.24
Plunger Cage	8119	28.90	8219	33.14	8319	34.68	8519	46.34	8619	70.38	8719	80.78
Plunger Follower	8120	32.70	8220	38.34	8320	39.96	8520	51.74	8620	63.40	8720	74.56
Plunger Poppet 442	8121	13.52	8221	15.02	8321	15.42	8521	19.40	8621	25.66	8721	26.34
Plunger Poppet 444	8135	31.16	8235	33.84	8335	35.60	8535	47.26	8635	67.50	8735	86.48
Plunger Rings	8122	12.40	8222	13.38	8322	14.90	8522	18.42	8622	32.14	8722	33.48
Rod length		16"		17"		18"		19"		20"		21"
7/16" Stainless Steel Plgr Rod	8123	24.02	8223	24.54	8323	25.04	8523	25.50	8623	28.86	8723	29.34
5/8" Stainless Steel Plgr Rod	8124	32.24	8224	32.88	8324	33.58	8524	34.24	8624	34.88	8724	35.52
Hex Locking Nut - 7/16"	8125	1.18	8125	1.16	8125	1.18	8125	1.18		*		*
Hex Locking Nut - 5/8"	8225	*	8225	*	8225	*	8225	*	8225	2.02	8225	2.02
Plunger Complete #442 Cyl	8126	95.92	8226	108.30	8326	115.32	8526	150.20	8626	206.68	8726	233.90
Plunger Complete #444 Cyl	18126	119.10	18226	134.76	18326	145.10	18526	186.56	18626	256.24	18726	293.42
Flat Spider Cage	8134	13.52	8234	15.06	8334	15.32	8534	17.90	8634	28.12	8734	29.00
Check Poppet #442/444	8135	31.16	8235	33.84	8335	35.60	8535	47.26	8635	67.50	8735	86.48
Facing for 442 Ck/444 Plgr Poppt	8137	4.32	8237	4.66	8337	4.98	8537	5.78	8637	7.16	8737	7.80

SEE ONLINE CATALOG FOR MORE DETAILS @ WWW.MIDLAND-MIDCO.COM

PRICES SUBJECT TO CHANGE WITHOUT NOTICE

1889 - 133 Years of Quality & Service - 2022





MIDLAND WATER WELL CYLINDERS

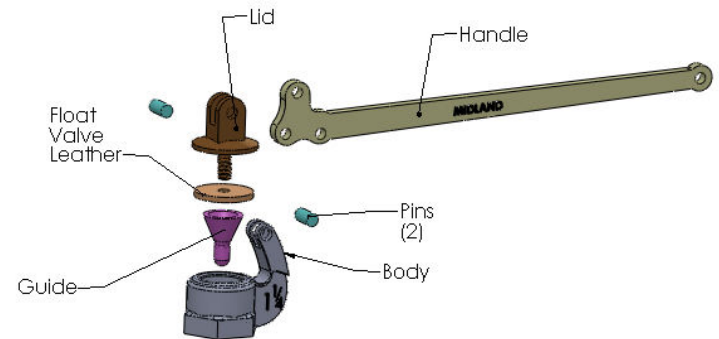
This **all brass Float Valve** has the body threaded accurately to match the size and seat on to which the lid closes. The lid is fitted with a tapering guide to ensure a perfect seating as the valve is closed and the handle of the valve is raised. Please see our online catalog for product specifications and details at: www.midland-midco.com

Midland Tank Flanges are solid brass with standard iron pipe threads and holes drilled for #6 tinner rivets, unless otherwise specified. The soldering to galvanized iron tanks and cisterns is made easy as the soldering face and edge of the flange is machined and requires no filing or smoothing. Please see our online catalog for product specifications and details at: www.midland-midco.com

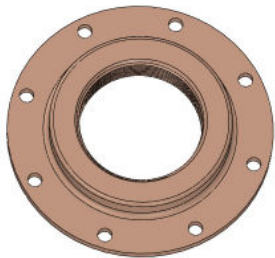


Midland Float Valve

	1/2"		3/4"		1"		1 1/4"		1 1/2"		2"		2 1/2"		3"		4"	
	P/N	List \$	P/N	List \$	P/N	List \$	P/N	List \$	P/N	List \$	P/N	List \$	P/N	List \$	P/N	List \$	P/N	List \$
Float Valve Complete	911	65.76	912	65.76	913	87.92	914	106.68	915	127.76	916	155.78	917	238.10	918	301.92	9110	417.96
Body	9111	27.60	9112	27.98	9113	31.28	9114	40.30	9115	44.84	9116	58.66	9117	79.52	9118	104.74	9120	199.22
Handle	9211	15.92	9212	15.92	9213	19.20	9214	28.06	9215	34.64	9216	46.76	9217	52.78	9218	69.80	9220	81.86
Lid	9311	10.88	9312	10.88	9313	17.02	9314	20.00	9315	23.74	9316	27.92	9317	48.84	9318	58.78	9320	81.06
Guide	9411	7.42	9412	7.42	9413	14.00	9414	16.74	9415	18.18	9416	27.34	9417	30.24	9418	38.18	9420	64.56
Float Valve Leather	9711	1.62	9712	1.62	9713	1.72	9714	1.90	9715	2.38	9716	4.10	9717	7.68	9718	10.54	9720	16.02
Lid/Guide/Leather comp.	9811	20.54	9812	20.54	9813	36.00	9814	41.56	9815	50.22	9816	64.60	9817	87.04	9818	109.92	9820	173.52
Screws for 1/2, 3/4, & 1"	9511	0.80																
Nuts for 1/2, 3/4, & 1"	9611	0.56																
Screws for 1 1/4 & 1 1/2"	9514	1.28																
Nuts for 1 1/4 & 1 1/2"	9614	0.72																
Screws for 2, 2 1/2, 3 & 4"	9516	2.16																
Nuts for 2, 2 1/2, 3 & 4"	9616	0.88																



Midland Tank Flanges



TANK FLANGES								
Size	P/N	List \$	Size	P/N	List \$	Size	P/N	List \$
1/8"	11117	14.92	1 1/4"	11217	18.46	4"	11317	63.40
1/4"	11118	14.92	1 1/2"	11218	20.56	4 1/2"	11318	*
3/8"	11119	14.92	2"	11219	24.32	5"	11319	*
1/2"	11120	15.68	2 1/2"	11220	51.80	6"	11320	*
3/4"	11121	17.80	3"	11221	52.86	*	*	*
1"	11122	18.24	3 1/2"	11222	55.58	*	*	*

* Price available upon request.

SEE ONLINE CATALOG FOR MORE DETAILS @ WWW.MIDLAND-MIDCO.COM

PRICES SUBJECT TO CHANGE WITHOUT NOTICE

1889 - 133 Years of Quality & Service - 2022





MIDLAND WATER WELL CYLINDERS

Midland Regular Stuffing Boxes (heavy duty) are all brass with stainless steel rods and include square rope packing. Please see the Midland Catalog Online for specifications and ordering options at www.midland-midco.com and select 'Water Well Cylinders' and then the 'View Midland Catalog' on the left side of the page.

Midland S.L. Stuffing Boxes (heavy duty) are all brass with four V rings held in place with a steel spring. Please see the Midland Catalog Online for specifications and ordering options at www.midland-midco.com and select 'Water Well Cylinders' and then the 'View Midland Catalog' on the left side of the page.

Midland Inverted Brass Tube (IBT) Stuffing Boxes (heavy duty) are all brass with stainless steel rods and use cup leathers. Please see the Midland Catalog Online for specifications and ordering options at www.midland-midco.com and select 'Water Well Cylinders' and then the 'View Midland Catalog' on the left side of the page.

Midland Stuffing Boxes

Complete Regular Stuffing Boxes

Pipe Size	1-1/4"		1-1/2"		2"	
w/ 18" S.S. rod 7/16 thd.	1014	186.46	1024	200.32	1034	214.38
w/ 18" S.S. rod 5/8 thd.	2014	186.46	2024	200.32	2034	214.38

Repair Parts for Regular Stuffing Boxes

	1-1/4"		1-1/2"		2"	
Body	1013	63.12	1023	72.26	1033	78.12
Nut w/ oil bowl	1016	41.02	All parts other than body interchangeable			
Gland	1017	18.00				
S.S. rod 18" w/ 7/16" thd.	1019	45.54	All parts other than body interchangeable			
S.S. rod 18" w/ 5/8" thd.	2019	45.54				

S.L. Stuffing Boxes

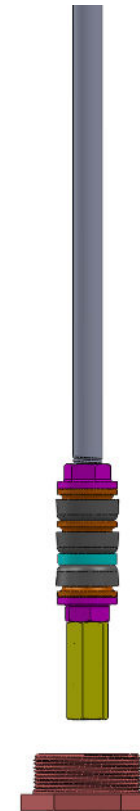
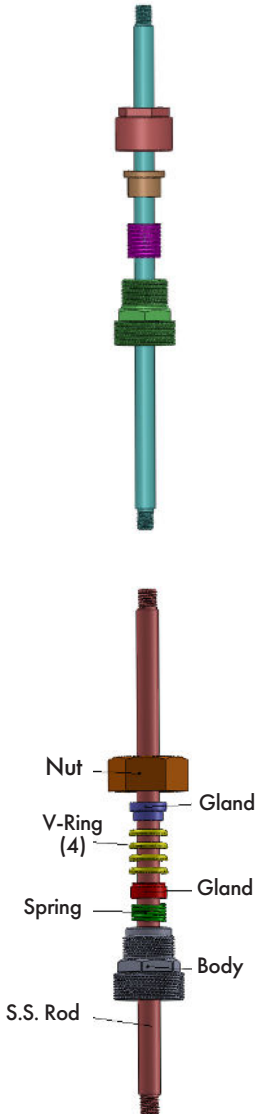
Pipe Size	1-1/4"		1-1/2"		2"	
S.S. rod 18" w/7/16 thd.	10110	200.24	10210	210.22	10310	219.98
S.S. rod 18" w/ 5/8 thd.	20110	200.24	20210	210.22	20310	219.98

S.L. Repair Parts

Body	10112	61.38	10212	63.42	10312	68.02
Nut	10113	50.22	All parts other than body interchangeable			
Gland 1 set top & bottom	10114	24.54				
Spring	10115	7.98	All parts other than body interchangeable			
V-ring - requires 4	10116	3.12				

IBT Stuffing Boxes

P/N	Complete Units	List \$
1111	#1 IBT	177.38
1121	#2 IBT	209.60
1112	#3 IBT	223.28
1113	#4 IBT 2"	282.32
1114	#4 IBT 2 1/2"	306.10
1122	#5 IBT 2 1/2"	436.10
1123	#5 IBT 3"	533.30
1115	Barrel for #1	94.66
1125	Barrel for #2	100.36
1135	Barrel for #3	108.28
1145	Barrel for #4	131.94
1155	Barrel for #5	154.66
1126	2" Bushing for #2	63.12
1126	2" Bushing for #3	63.12
1146	2" Bushing for #4	63.12
1147	2 1/2" Bushing for #4	100.98
1157	2 1/2" Bushing for #5	100.98
1158	3" Bushing for #5	160.96
11111	Nut for #1	13.42
11211	Nut for #2	14.32
11311	Nut for #3	14.32
11411	Nut for #4	14.32
11511	Nut for #5	20.88
11112	Plunger ring for #1	12.22
11212	Plunger ring for #2	12.22
11312	Plunger ring for #3	12.22
11412	Plunger ring for #4	14.10
11512	Plunger ring for #5	19.58



SEE ONLINE CATALOG FOR MORE DETAILS @ WWW.MIDLAND-MIDCO.COM

PRICES SUBJECT TO CHANGE WITHOUT NOTICE

1889 - 133 Years of Quality & Service - 2022

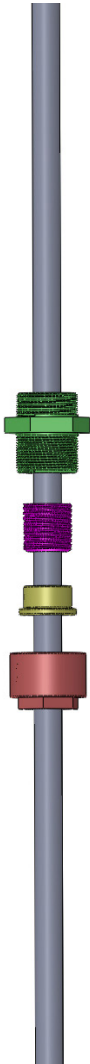




MIDLAND WATER WELL CYLINDERS

Midland Heavy Service Boxes (extra heavy duty) are all brass with stainless steel rods and include square rope packing. Please see the Midland Catalog Online for specifications and ordering options at www.midland-midco.com and select 'Water Well Cylinders' and then the 'View Midland Catalog' on the left side of the page.

Midland Stuffing Boxes Continued



Modified IBT Stuffing Boxes		
#4 IBT less bushing thread 1 1/4" pipe both ends - complete	1143	225.52
#4 IBT barrel only threaded 1 1/4" pipe both ends	1144	128.42

Heavy Service Packing Boxes						
Pipe Size	2"		2-1/2"		3"	
S.S. rod 48" w/ 7/8" thrd	1044	508.70	1054	558.86	1064	569.30
H.S. Repair Parts						
Body	1043	151.30	1053	188.02	1063	193.46
Nut	1046	107.96	1056	136.18	1056	136.18
Gland	1047	54.82	1057	55.64	1057	55.64
S.S. rod 48" w/7/8" thd.	1049	177.24	Rods are universal for H.S.			

IBT Stuffing Boxes		
P/N		List \$
11115	Couplings for #1	6.52
11215	Couplings for #2	7.26
11315	Couplings for #3	7.26
11415	Couplings for #4	7.26
11515	Couplings for #5	11.60
11110	Flat Spacers for #1	6.80
11210	Flat Spacers for #2	6.80
11310	Flat Spacers for #3	6.80
11410	Flat Spacers for #4	7.76
11510	Flat Spacers for #5	8.04
11114	S.S. Plunger rod #1	16.12
11214	S.S. Plunger rod #2	19.28
11314	S.S. Plunger rod #3	22.52
11414	S.S. Plunger rod #4	22.52
11514	S.S. Plunger rod #5	32.14
1119	#1 Plunger Complete	108.94
1129	#2 Plunger Complete	110.72
1139	#3 Plunger Complete	114.08
1149	#4 Plunger Complete	124.40
1159	#5 Plunger Complete	177.70

SEE ONLINE CATALOG FOR MORE DETAILS @ WWW.MIDLAND-MIDCO.COM

PRICES SUBJECT TO CHANGE WITHOUT NOTICE

1889 - 133 Years of Quality & Service - 2022





MIDLAND WATER WELL CYLINDERS

Midland Coupling Adaptors are made using '304' stainless steel and allows you to connect virtually all size components along the sucker rod quickly and easily.
www.midland-midco.com

Stainless Steel Coupling Adaptors

Custom Combinations Available

Standard

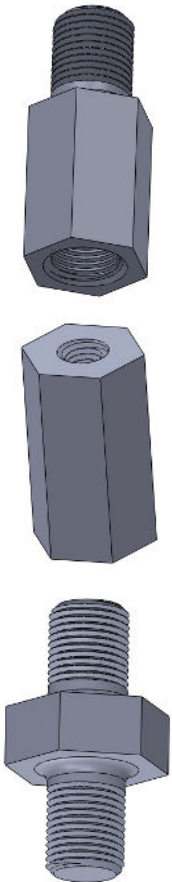
Diameter	Length	Description	Part #	List \$
5/8M	7/16F	5/8 NC M x 7/16 NC F	371308	30.44
5/8M	7/8M	5/8 NC M x 7/8 NC M	371314	30.44
7/8M	5/8F	7/8 NC M x 5/8 NC F	371325	30.44
7/8M NC	1/2F NPT	7/8 NC M x 1/2 NPT F	371327	30.44
7/8M NC	3/8F NPT	7/8 NC M x 3/8 NPT F	371330	30.44
5/8M NC	1/2F NPT	5/8 NC M x 1/2 NPT F	371332	30.44

Optional

Diameter	Length	Description	Part #	List \$
7/8M	7/16F	7/8 NC M x 7/16 NC F	371313	31.54
5/8M	7/8F	5/8 NC M x 7/8 NC F	371315	31.54
7/8F	5/8F	7/8 NC F x 5/8 NC F	371317	31.54
3/4M	5/8F	3/4 NC M x 5/8 NC F	371319	31.54
5/8M	3/4F	5/8 NC M x 3/4 NC F	371320	31.54
7/8F	7/8F	7/8 NC F x 7/8 NC F	371321	31.54
5/8F NC	3/8F NC	5/8 NC F x 3/8 NC F	371322	31.54
5/8M	5/8M	5/8 NC M x 5/8 NC M	371323	31.54
7/8M	7/8M	7/8 NC M x 7/8 NC M	371326	31.54
3/8F NC	1/2F NPT	3/8 NC F x 1/2 NPT F	371328	31.54
5/8M NC	3/8F NPT	5/8 NC M x 3/8 NPT F	371329	31.54
5/8F NC	1/2M NPT	5/8 NC F x 1/2 NPT M	371333	31.54
7/8M	7/8F	7/8 NC M x 7/8 NC F	371334	31.54
5/8F	5/8F	5/8 NC F x 5/8 NC F	371335	31.54
5/8M	5/8F	5/8 NC M x 5/8 NC F	371336	31.54
1M	5/8F	1 NC M x 5/8 NC F	371340	31.54
1M	7/8F	1 NC M x 7/8 NC F	371341	31.54
5/8F NC	3/8M NPT	5/8 NC F x 3/8 NPT M	371344	31.54
7/8F NC	3/8M NPT	7/8 NC F x 3/8 NPT M	371345	31.54
7/8F NC	1/2M NPT	7/8 NC F x 1/2 NPT M	371346	31.54
5/8M NC	1/2M NPT	5/8 NC M x 1/2 NPT M	371347	31.54
3/4F	5/8F	3/4 NC F x 5/8 NC F	371348	31.54
7/16M NC	1/2F NPT	7/16 NC M x 1/2 NPT F	371349	31.54
1M NC	1/2F NPT	1 NC M x 1/2 NPT F	371350	31.54
7/16F NC	1/2F NPT	7/16 NC F x 1/2 NPT F	371352	31.54
5/8F NC	1/2F NPT	5/8 NC F x 1/2 NPT F	371353	31.54
5/8F NC	3/4F NPT	5/8 NC F x 3/4 NPT F	371354	31.54
3/8F NC	7/16M NC	3/8 NC F x 7/16 NC M	371355	31.54
1/2F NC	1/2F NC	1/2 NC F x 1/2 NC F	371357	31.54

Optional

7/16F	7/16F	7/16 NC F x 7/16 NC F	371305	31.54
7/16M	5/8F	7/16 NC M x 5/8 NC F	371306	31.54
7/16F	5/8F	7/16 NC F x 5/8 NC F	371307	31.54
7/16M	7/8F	7/16 NC M x 7/8 NC F	371309	31.54
7/16F	1/2F	7/16 NC F x 1/2 NC F	371310	31.54
7/16M	1/2F	7/16 NC M x 1/2 NC F	371311	31.54
1/2M	7/16F	1/2 NC M x 7/16 NC F	371312	31.54
5/8M	1/2F	5/8 NC M x 1/2 NC F	371316	31.54
5/8F	1/2F	5/8 NC F x 1/2 NC F	371318	31.54
5/8M	3/8F	5/8 NC M x 3/8 NC F	371324	31.54
7/16F	3/8M	7/16 NC F x 3/8 NC M	371331	31.54
1/2F	7/8M	1/2 NC F x 7/8 NC M	371337	31.54
3/8M	5/8F	3/8 NC M x 5/8 NC F	371338	31.54
3/8F	7/8M	3/8 NC F x 7/8 NC M	371339	31.54
3/8F	7/16F	3/8 NC F x 7/16 NC F	371342	31.54
3/8F	3/8F	3/8 NC F x 3/8 NC F	371343	31.54
3/8M	1/2F	3/8 NPT M x 1/2 NPT F	371356	31.54



SEE ONLINE CATALOG FOR MORE DETAILS @ WWW.MIDLAND-MIDCO.COM

PRICES SUBJECT TO CHANGE WITHOUT NOTICE

1889 - 133 Years of Quality & Service - 2022

